

Construction Drawings For Tommy's Car Wash Jerome, Idaho 2023

Tommy's Car Wash 2711 South Lincoln Jerome Idaho 83338

EHM Engineers, Inc. BUILDING THE FUTURE ONE FOUNDATION OF EXCELLENCE

GENERAL NOTES:

- 1. CONTRACTOR SHALL HAVE A CURRENT SET OF CONSTRUCTION PLANS STAMPED BY THE ENGINEER WITH AN APPROVAL STAMP BY THE CITY AT THE WORKSITE. 2. ALL CONSTRUCTION SHALL CONFORM TO THE 2020 IDAHO STANDARDS FOR PUBLIC WORKS CONSTRUCTION...

IDAPA 58.01.08.542.07 - SEPARATION OF POTABLE, NON-POTABLE, AND RAW WATER PIPELINES

07. SEPARATION OF POTABLE, NON-POTABLE, AND RAW WATER PIPELINES. THE REQUIREMENTS FOR THE PROTECTION OF POTABLE MAINS FROM CONTAMINATION BY NON-POTABLE PIPELINES ARE DESCRIBED IN SUBSECTIONS 542.07.a. THROUGH 542.07.c. FOR THE PURPOSES OF SUBSECTION 542.07, THE TERM "PIPELINE" APPLIES TO BOTH MAINS AND SERVICES...

LEGEND:

Table with 2 columns: Symbol and Description. Includes symbols for Property Boundary, Roadway Centerline, Contour Line, Water Line, Sanitary Sewer Line, Storm Sewer Line, etc.

SHEET INDEX:

Table with 2 columns: Description and Sheet No. Includes Title Sheet, Site Layout and Grading Plan, and Site Utility Plan & Profile.

UTILITY SERVICE NOTES:

- 1. ALL WATER SERVICE LOCATIONS TO BE INSTALLED WITH A BURY DEPTH OF 5 FEET FROM FINISHED GRADE TO STATIONS, OFFSETS, AND ELEVATIONS SHOWN. WHERE OFFSETS ARE NOT GIVEN THE CONTRACTOR SHALL INSTALL THE WATER OR P.I. SERVICE BOX SO THAT THE FACE OF THE RISER IS LOCATED 12" TO 18" FROM BACK OF SIDEWALK...

WATER NOTES:

- 1. ALL CONSTRUCTION AND MATERIALS SHALL BE IN ACCORDANCE WITH TEN STATES STD'S., THE 2020 IDAHO STANDARDS FOR PUBLIC WORKS CONSTRUCTION, THE UNIFORM PLUMBING CODE, THE CITY OF JEROME REVISIONS TO THE 2020 ISPOC AND ALL OTHER APPLICABLE AGENCIES UNLESS OTHERWISE SHOWN. IT SHALL BE THE RESPONSIBILITY OF THE CONTRACTOR TO BE AWARE OF THE CONTENTS OF THESE STANDARDS...

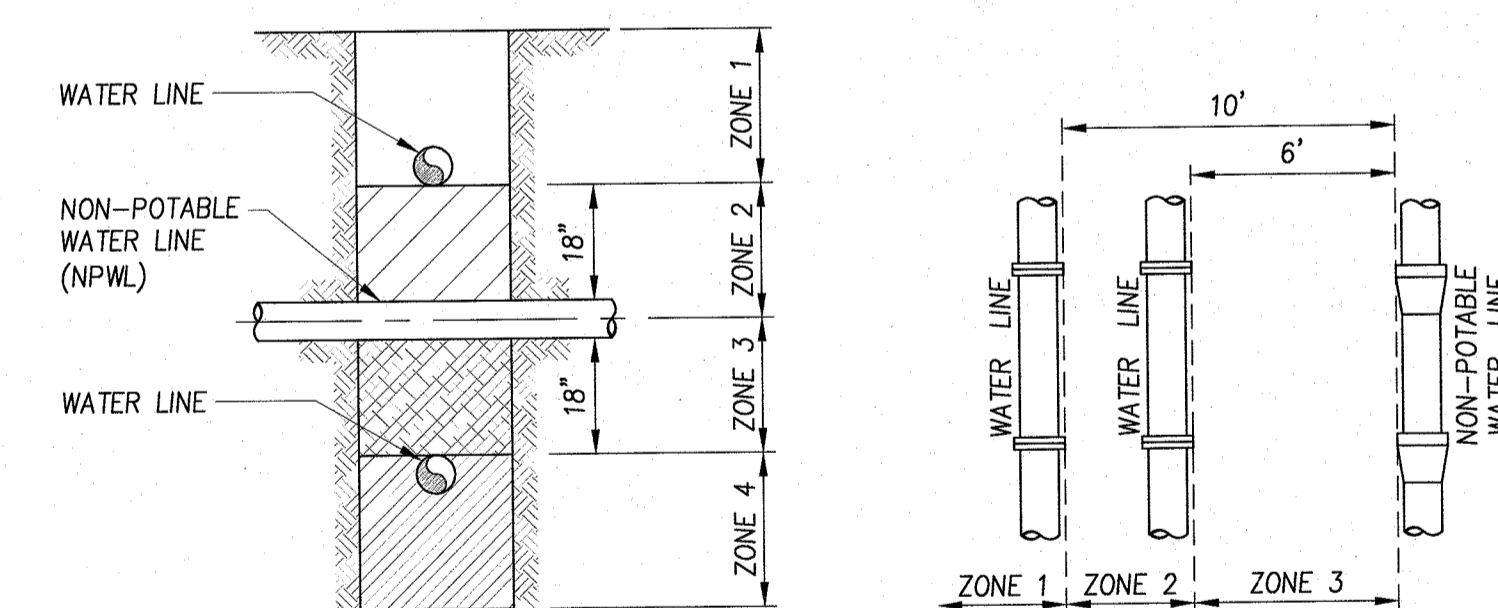
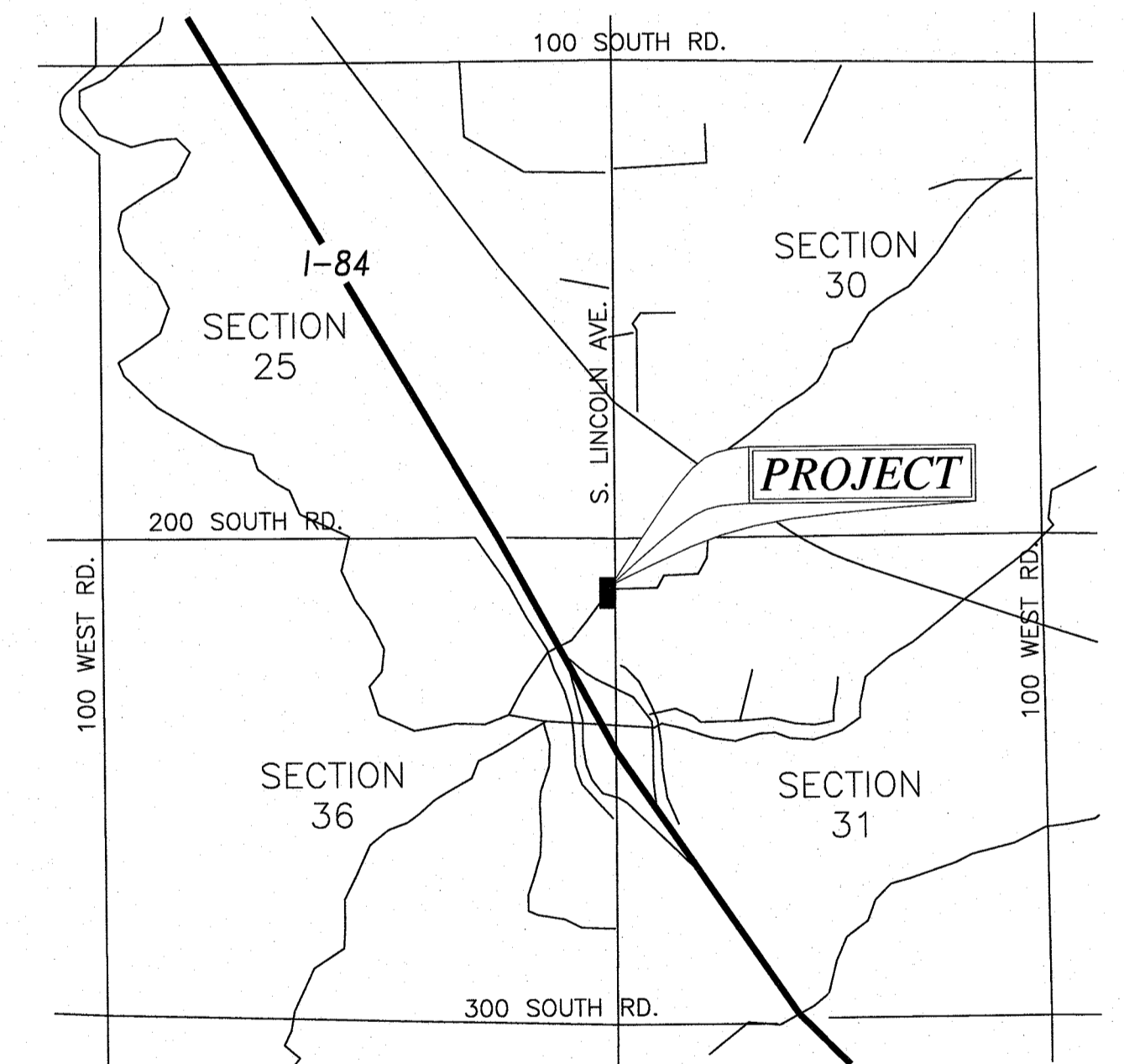
WATER MAIN DISINFECTION NOTES:

- A. CLEAN AND DISINFECT WATER-DISTRIBUTION PIPING AS FOLLOWS: 1. PURGE NEW WATER-DISTRIBUTION PIPING SYSTEMS AND PARTS OF EXISTING SYSTEMS THAT HAVE BEEN ALTERED, EXTENDED OR REPAIRED BEFORE USE. 2. USE PURGING AND DISINFECTING PROCEDURE PRESCRIBED BY AUTHORITIES HAVING JURISDICTION OR IF METHOD IS NOT PRESCRIBED BY AUTHORITIES HAVING JURISDICTION, USE PROCEDURE PRESCRIBED IN NFPA 24 FOR FLUSHING OF PIPING...

ABBREVIATIONS:

Table with 2 columns: Abbreviation and Description. Includes BM BENCH MARK, CB/TCB CATCH BASIN/TOP CATCH BASIN, CL/CL CENTER LINE, CONST CONSTRUCT, etc.

VICINITY SKETCH:



VERTICAL SEPARATION REQUIREMENTS

- ZONE 1: A) WATER AND NPWL MUST BE SEPARATED BY AT LEAST 18". AND B) ONE FULL UNCLUT LENGTH OF BOTH PWL AND NPWL PIPE MUST BE CENTERED ON THE CROSSING SO THAT THE JOINTS ARE AS FAR AS POSSIBLE FROM THE CROSSING.

HORIZONTAL SEPARATION REQUIREMENTS

- ZONE 1: A) NO SPECIAL REQUIREMENTS. ZONE 2: A) NO SPECIAL REQUIREMENTS FOR POTABLE OR NON-POTABLE SERVICES. B) WATER AND NPWL SEPARATED BY AT LEAST 6 FEET AT OUTSIDE WALLS.

POTABLE/NON-POTABLE WATERLINE SEPARATION

N.T.S.

TITLE SHEET for TOMMY'S CAR WASH, JEROME

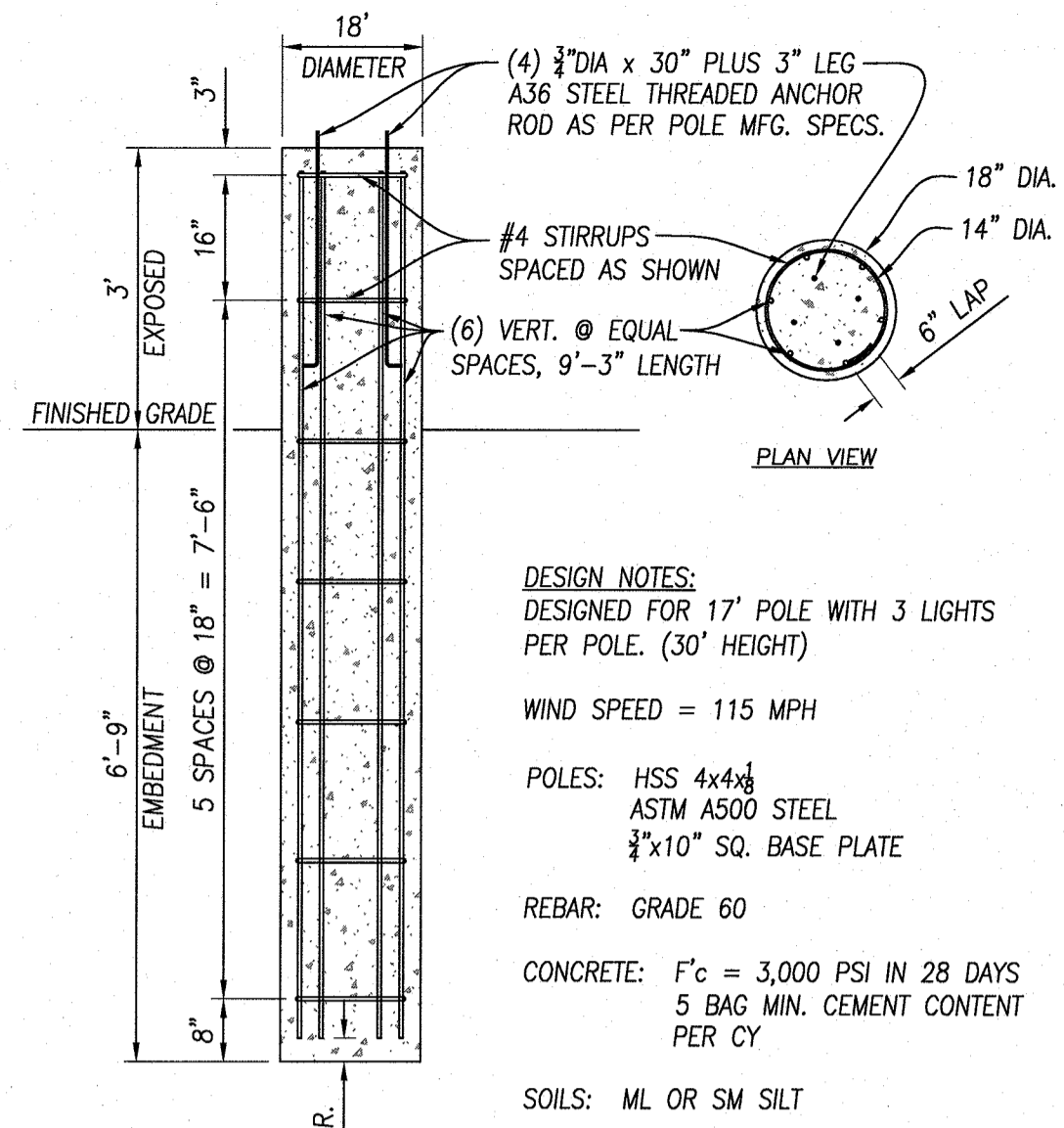
Tommy's Car Wash 2711 South Lincoln Jerome Idaho 83338

REVISIONS: 10/5/2022 JRS, RAISE BLDG 1', MOVE TRASH ENCLOSURE, ADD CURB TO SOUTH EDGE OF PARKING

DO NOT SCALE DRAWINGS. CONTRACTOR SHALL VERIFY ALL CONDITIONS AND DIMENSIONS AT THE JOB SITE AND NOTIFY THE ENGINEER OF ANY DIMENSIONAL ERRORS, OMISSIONS, OR DISCREPANCIES BEFORE BEGINNING OR FABRICATING ANY WORK.

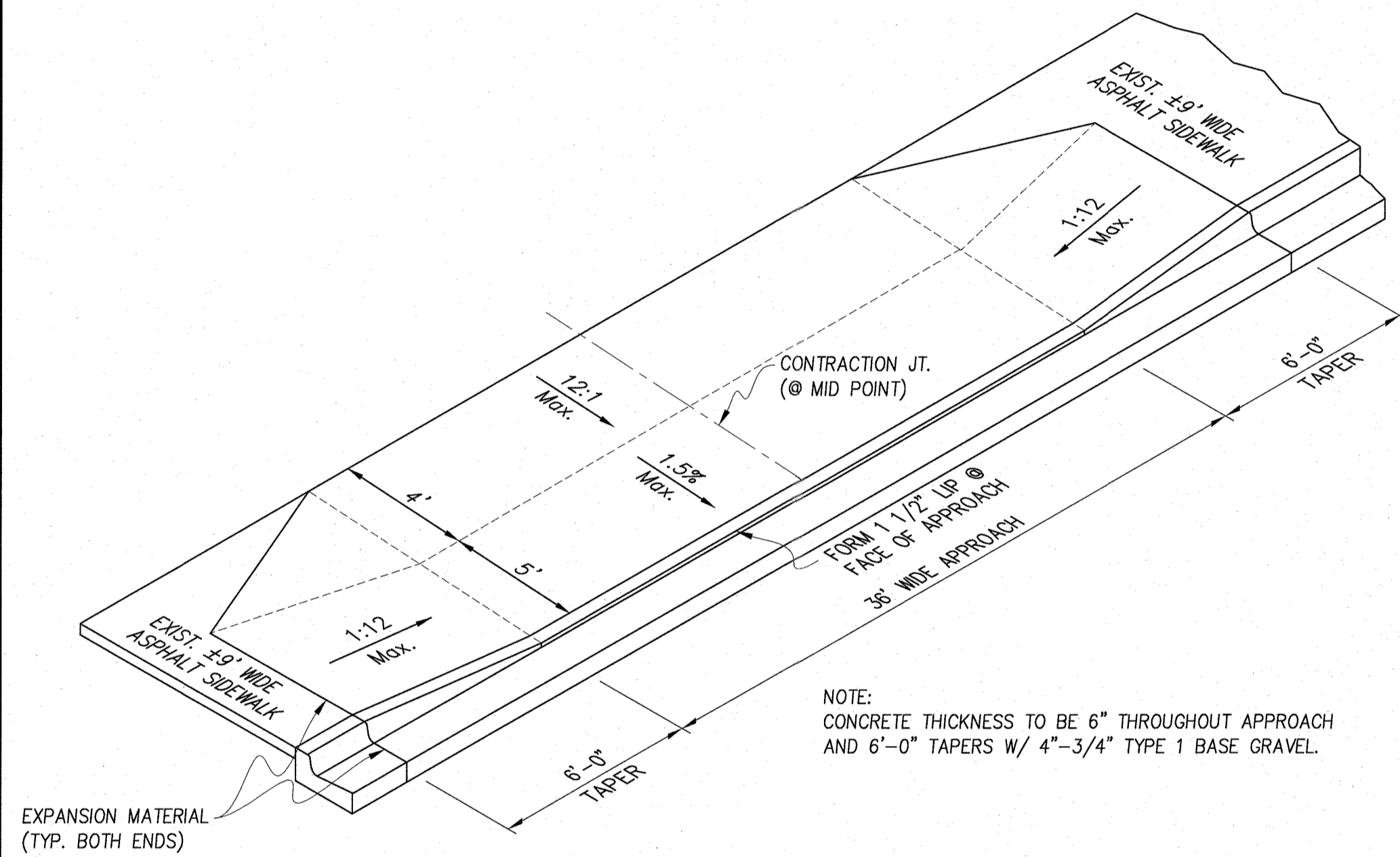


Approval box containing fields for City Approval, Approved, Design (K. NIELD), Drawn (J. SKEEN), Date (10/12/2021), Scale (AS SHOWN), DWG No. (045-21 SITE REV3), and Sheet (C-1).



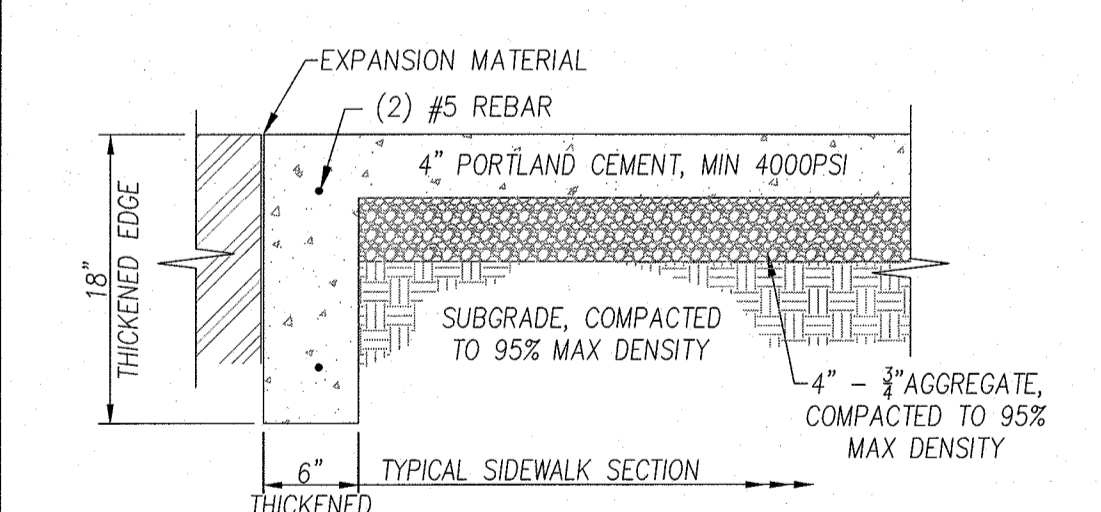
DESIGN NOTES:
 DESIGNED FOR 17" POLE WITH 3 LIGHTS PER POLE. (30' HEIGHT)
 WIND SPEED = 115 MPH
 POLES: HSS 4x4x $\frac{1}{4}$ ASTM A500 STEEL
 $\frac{3}{4}$ "x10" SQ. BASE PLATE
 REBAR: GRADE 60
 CONCRETE: F'_c = 3,000 PSI IN 28 DAYS
 5 BAG MIN. CEMENT CONTENT PER CY
 SOILS: ML OR SM SILT

LIGHT POLE FOUNDATION DETAIL nts



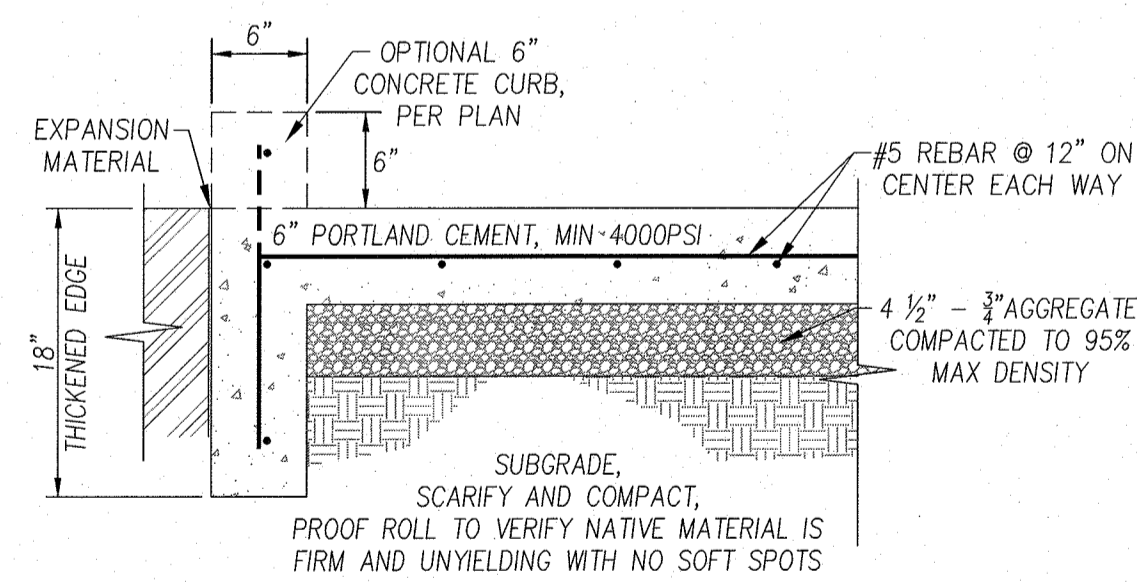
NOTE:
 CONCRETE THICKNESS TO BE 6" THROUGHOUT APPROACH AND 6'-0" TAPERS W/ 4"-3/4" TYPE 1 BASE GRAVEL.

DRIVEWAY APPROACH DETAIL, ATTACHED SIDEWALK nts



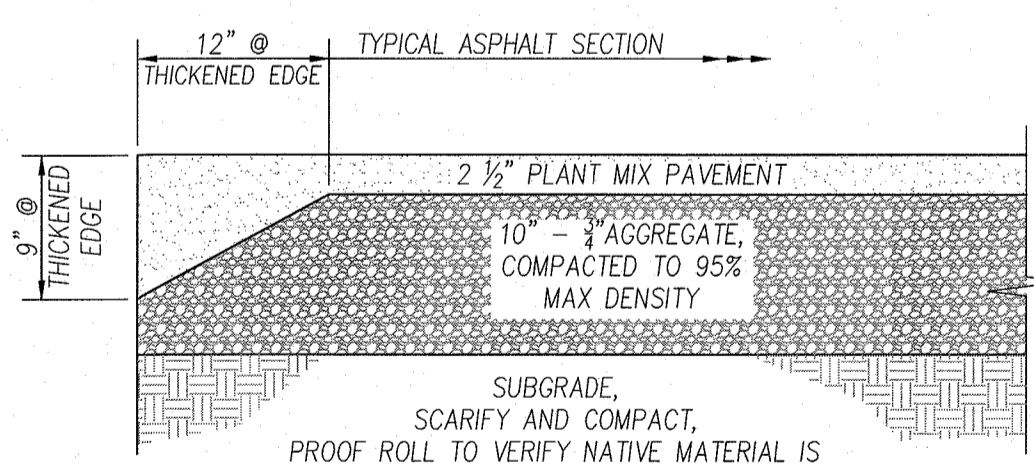
NOTES:
 1. PROVIDE EXPANSION MATERIAL AT 8' O.C. MAX. AND WHEN ADJOINING ANY OTHER CONCRETE WORK
 2. VERIFY BY OWNER SUPPLIED GEOTECHNICAL REPORT

CONCRETE SIDEWALK DETAIL nts



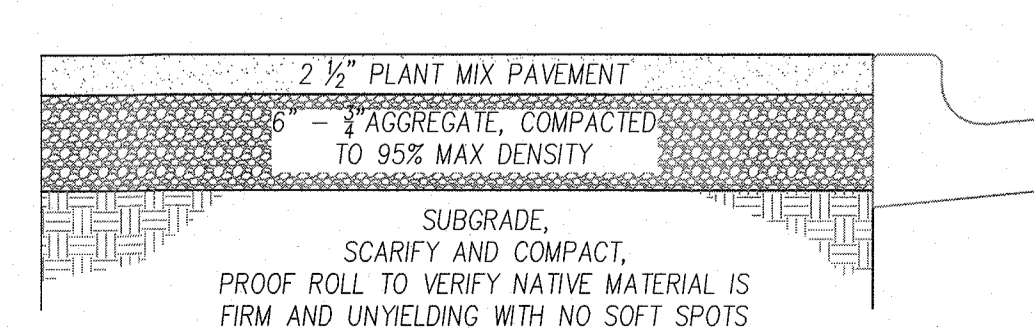
NOTE: VERIFY BY OWNER SUPPLIED GEOTECHNICAL REPORT

THICKENED EDGE CONCRETE SLAB DETAIL nts



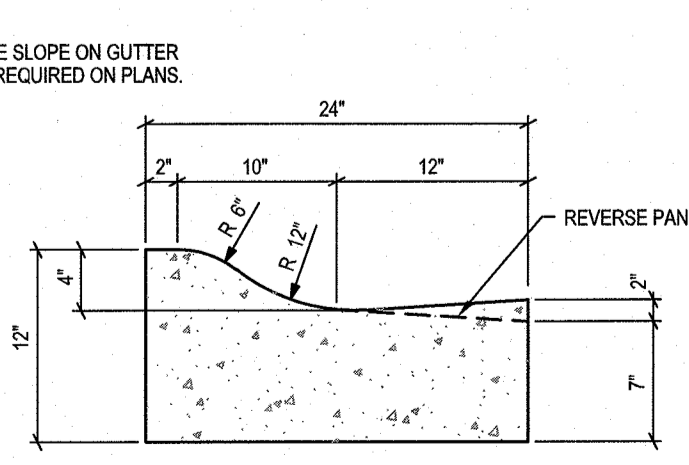
NOTE: VERIFY BY OWNER SUPPLIED GEOTECHNICAL REPORT

TYPICAL THICKENED EDGE ASPHALT SECTION nts

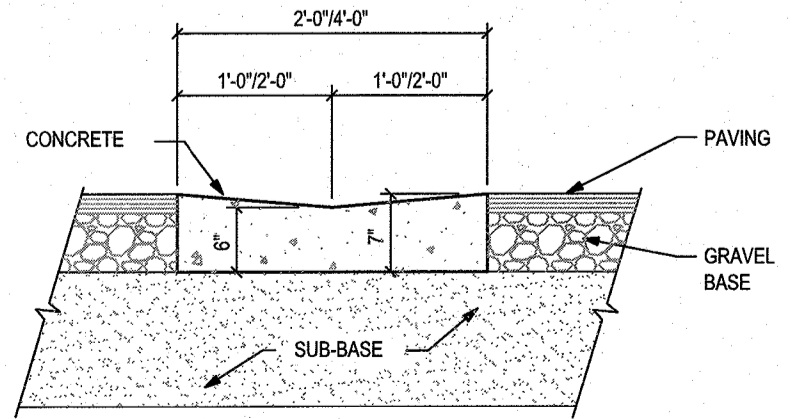


NOTE: VERIFY BY OWNER SUPPLIED GEOTECHNICAL REPORT

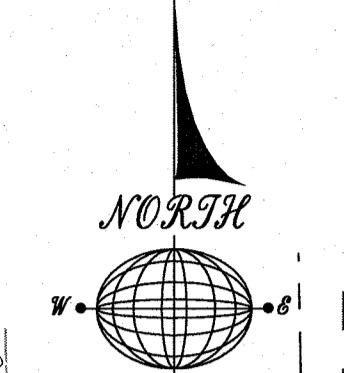
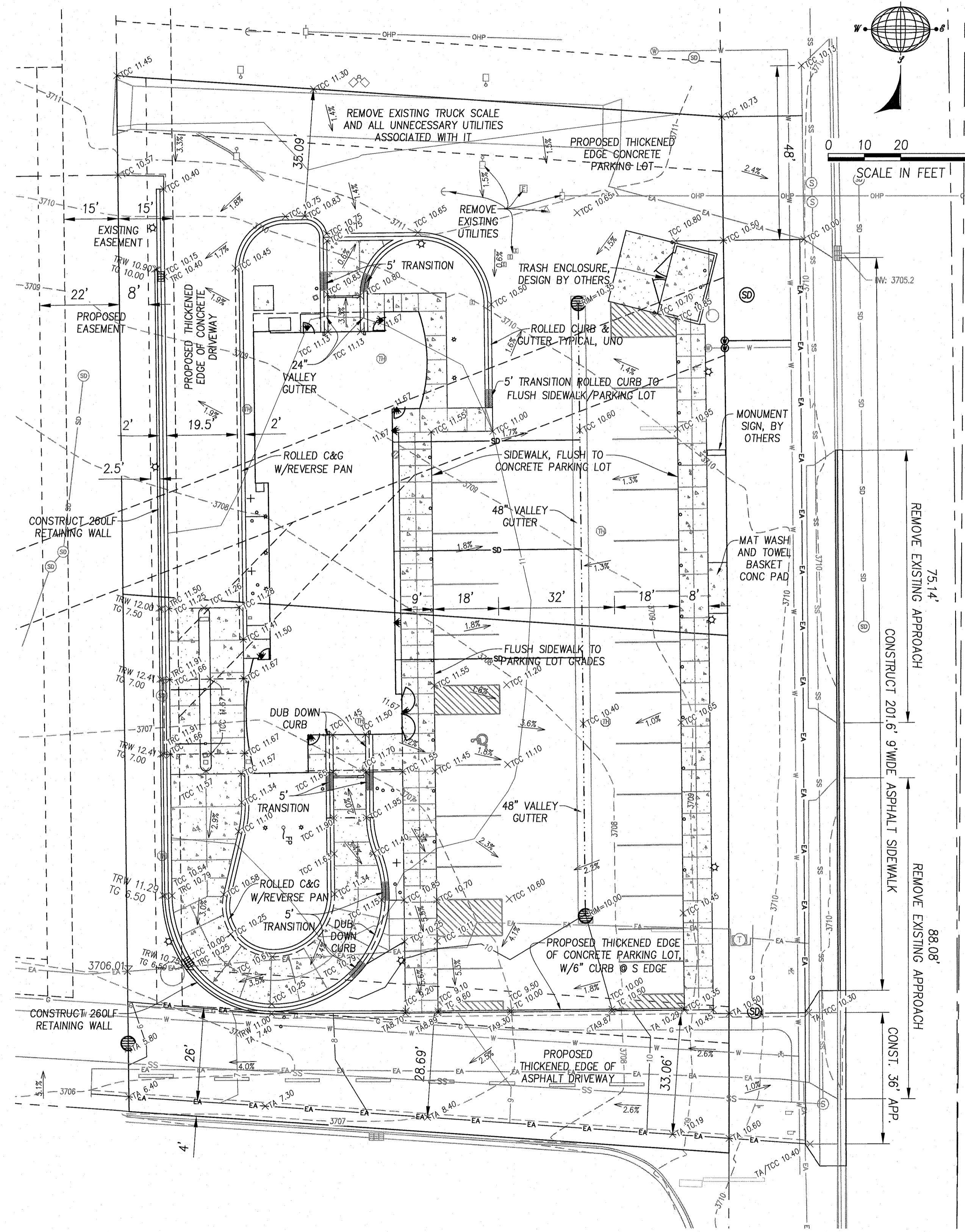
TYPICAL ASPHALT SIDEWALK SECTION nts



ROLLED CURB DETAIL nts



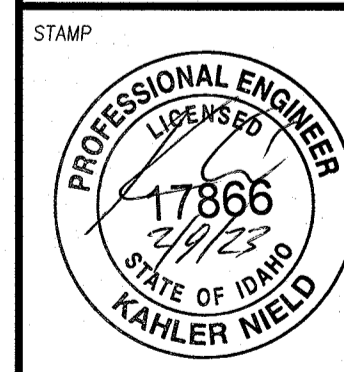
24" VALLEY GUTTER DETAIL nts



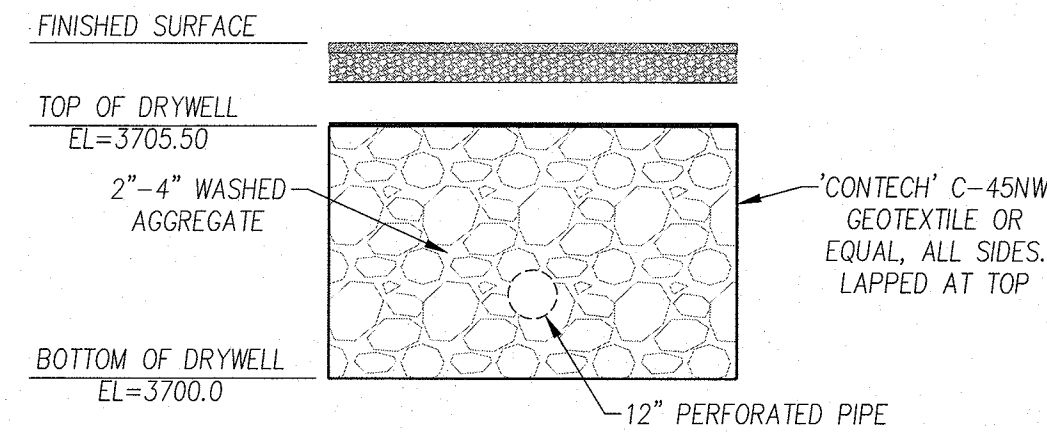
SITE LAYOUT AND GRADING PLAN
 for
TOMMY'S CAR WASH - JEROME

REVISIONS
 3/1/2022, JRS, DRIVEWAY WIDTH
 12/5/2022, JRS, RAISE BLDG 11'
 MOVE TRASH ENCLOSURE, ADD CURB TO SOUTH EDGE OF PARKING
 1/19/2023, JRS, EXIT GRADE

DO NOT SCALE DRAWINGS
 CONTRACTOR SHALL VERIFY ALL CONDITIONS AND DIMENSIONS AT THE JOB SITE AND NOTIFY THE ENGINEER OF ANY DIMENSIONAL ERRORS, OMISSIONS, OR DISCREPANCIES BEFORE BEGINNING OR FABRICATING ANY WORK.



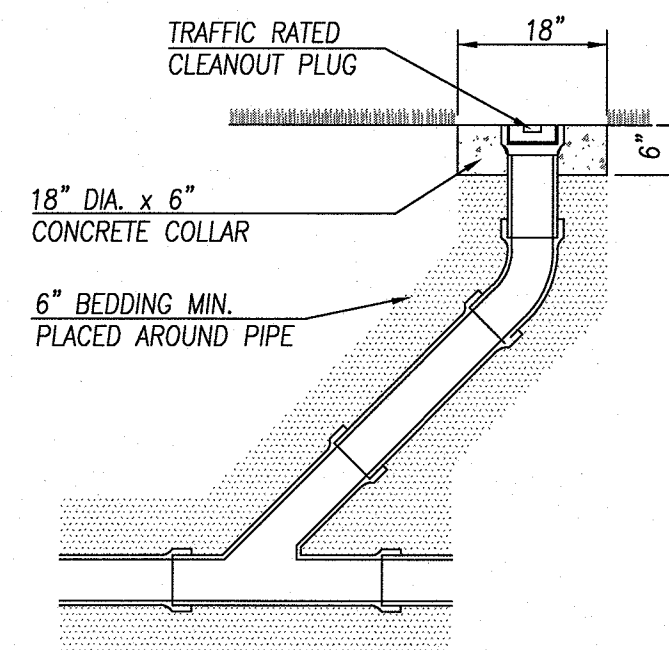
APPROVED: _____
 DESIGN: K. NIELD
 DRAWN: J. SKEEN
 DATE: 10/12/2021
 SCALE: AS SHOWN
 DWG. NO. 045-21 SITE REV3
 SHEET



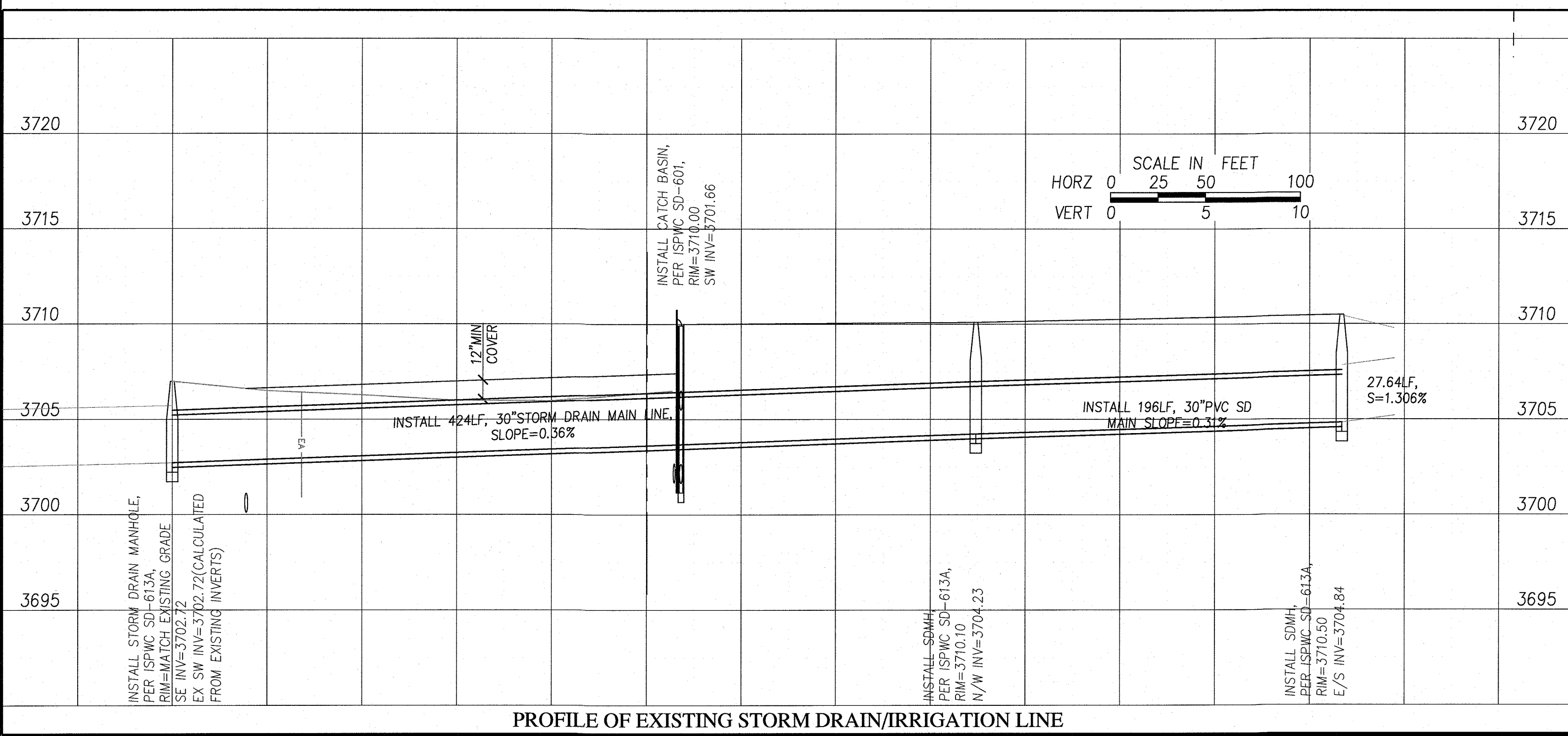
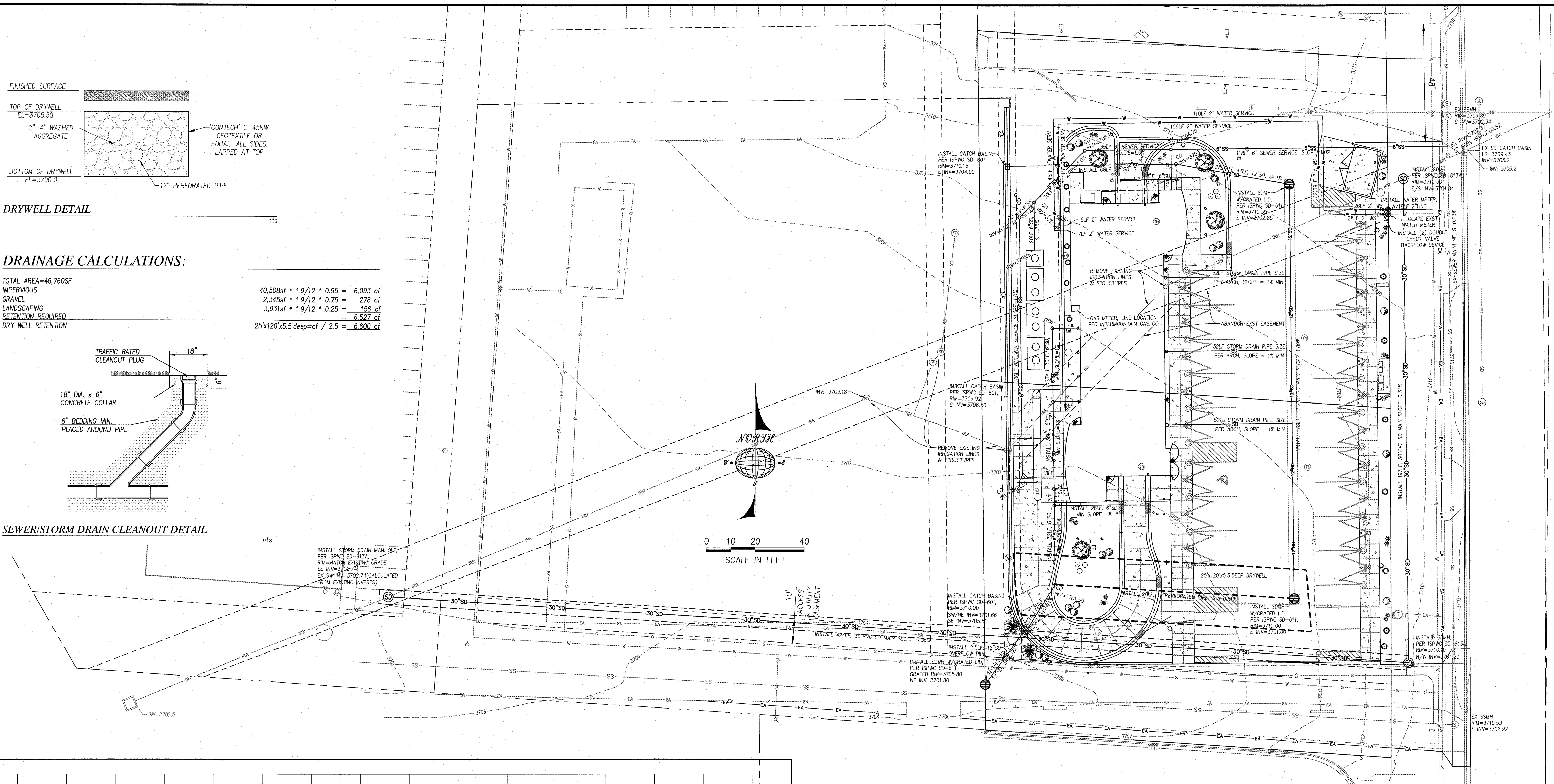
DRYWELL DETAIL

DRAINAGE CALCULATIONS:

TOTAL AREA=46,760SF	
IMPERVIOUS	40,508sf * 1.9/12 * 0.95 = 6,093 cf
GRAVEL	2,345sf * 1.9/12 * 0.75 = 278 cf
LANDSCAPING	3,931sf * 1.9/12 * 0.25 = 156 cf
RETENTION REQUIRED	= 6,527 cf
DRY WELL RETENTION	25'x120'x5.5'deep=cf / 2.5 = 6,600 cf



SEWER/STORM DRAIN CLEANOUT DETAIL

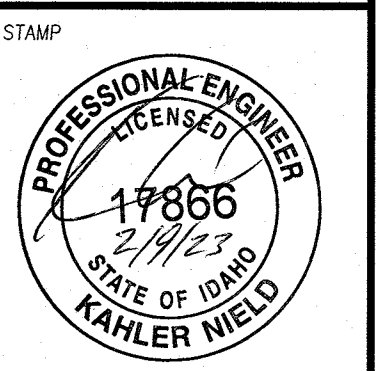


PROFILE OF EXISTING STORM DRAIN/IRRIGATION LINE

SITE UTILITY PLAN AND PROFILE
for
TOMMY'S CAR WASH JEROME

- REVISIONS
- 11/22/2021, JRS, RELOCATE SD
 - 12/6/2021, JRS, TOMMY'S UTILITY
 - 12/17/2021, JRS, STRM DRAIN
 - 1/26/2022, JRS, REVISE 30"SD
 - 12/5/2022, JRS, RAISE BLDG 1'
 - MOVE TRASH ENCLOSURE, ADD
 - CURB TO SOUTH EDGE OF PARKING

DO NOT SCALE DRAWINGS
CONTRACTOR SHALL VERIFY ALL
CONDITIONS AND DIMENSIONS AT
THE JOB SITE AND NOTIFY THE
ENGINEER OF ANY DIMENSIONAL
ERRORS, OMISSIONS, OR DIS-
CREPANCIES BEFORE BEGINNING
OR FABRICATING ANY WORK.



APPROVED	-
DESIGN	K. NIELD
DRAWN	J. SKEEN
DATE	10/12/2021
SCALE	AS SHOWN
	045-21 SITE REV3