

PROJECT:

TFSD 2023 CAPITAL IMPROVEMENTS - PACKAGE 2, HALLWAY CEILING IMPROVEMENTS AT HARRISON ELEMENTARY SCHOOL

600 Harrison St.
Twin Falls, ID 83301

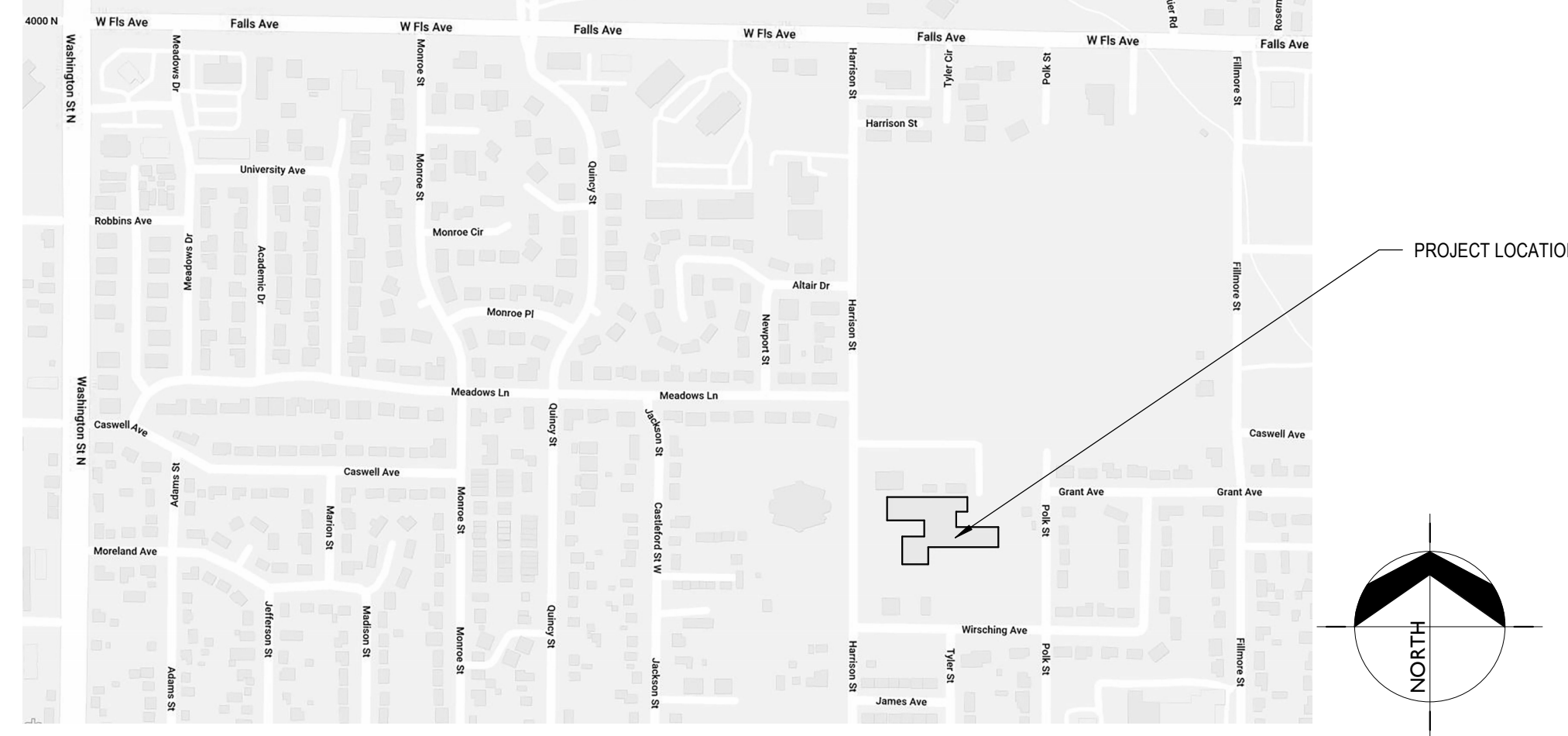
CLIENT:

VICINITY MAP :

H.A. - JOB # 23010

TWIN FALLS SCHOOL DISTRICT #411

201 Main Ave. W.
Twin Falls, ID 83301



HUMMEL ARCHITECTS

205 N. 10th Street, Suite 300, Boise, Idaho 83702, 208.343.7523
 482 Constitution Way, Suite 111, Boise, Idaho 83402, 208.343.7523
hummelarch.com

CONSULTANTS:

DRAWING SET:

DRAWING INDEX :

MECHANICAL / ELECTRICAL ENGINEER
CATOR RUMA

A: #1238, 420 S ORCHARD ST, BOISE, ID 83705
P: 208.343.3663

ARCHITECTURAL
FIRE PROTECTION
ELECTRICAL

- GENERAL
 - G0.00 COVER SHEET
 - G0.02 DRAWING INFORMATION
- DEMOLITION
 - D0.01 LEVEL 01 - DEMO RCP
- ARCHITECTURAL
 - A2.01 FIRST FLOOR PLAN - HALLWAY IMPROVEMENTS
 - A8.01 LEVEL 01 - COMPOSITE CEILING PLAN
 - A8.02 LEVEL 01 - CEILING FINISH PLAN
- FIRE PROTECTION
 - F0.01 FIRE PROTECTION LEGENDS & NOTES
 - F2.01 FIRE PROTECTION PLAN - HALLWAY IMPROVEMENTS
- ELECTRICAL
 - E0.01 ELECTRICAL LEGENDS, SCHEDULES & NOTES
 - E2.01 LIGHTING PLANS - HALLWAY IMPROVEMENTS

PERMIT SET

DRAWING SET NO.



SYMBOLS: 1

7 KEYNOTE TAG

REFERENCE TAG

ACCESSORY TAG

GRIDLEVEL HEAD

XXXXXX WALL TYPE TAG

XXX WINDOW TAG

XXXX DOOR TAG

ROOM NAME ROOM TAG

150 SF CASEWORK TAG

SECTION # WALL SECTION

SECTION # BUILDING SECTION

VIEW # OR ENLARGED PLAN CALLOUT

VIEW # OR LETTER INTERIOR ELEVATION

B.O. DECK LEVEL NAME / ELEVATION MARKER

1 View Name VIEW TITLE

GRAPHIC SCALE

MASTER KEYNOTES:

Keynote #	Keynote Text
1.04	COORDINATE WITH REFLECTED CEILING PLAN.
2.32	EXISTING SOFFIT TO REMAIN
2.34	EXISTING BEAM TO REMAIN
2.80	REMOVE EXISTING DIRECTIONAL LIGHT. SEE ELECTRICAL FOR NEW WORK.
2.82	EXISTING DATA TRAY TO REMAIN. PROTECT IN PLACE. SEE FINISH SCHEDULE FOR NEW WORK.
9.31	CROSS BRACING PER MANUFACTURERS INSTRUCTIONS
095113.A	ACOUSTICAL PANEL CEILING
095113.C	APC'S
095113.D	2" CURBED TRIM, BASIS OF DESIGN; AXIOM VECTOR CURVED PERIMETER TRIM BY ARMSTRONG
095113.E	HANGER WIRE
095113.F	T-BAR GRID SYSTEM

ABBREVIATIONS: 2

#	NUMBER OR POUND	JAN	JANITOR
Ø	DIAMETER	JST	JOIST
∠	ANGLE	JT	JOINT
@	AT	LAB	LABORATORY
&	AND	LAM	LAMINATE
CL	CENTERLINE	LAV	LAVATORY
AB	ANCHOR BOLT	MAT	MATERIAL
ACP	ACOUSTICAL CEILING PANEL	MAX	MAXIMUM
ACT	ACOUSTICAL CEILING TILE	MECH	MECHANICAL
ADJ	ADJUSTABLE	MET	METAL
AFF	ABOVE FINISH FLOOR	MFR	MANUFACTURER
ALUM	ALUMINIUM	MIN	MINIMUM
ANOD	ANODIZED	MISC	MISCELLANEOUS
APPROX	APPROXIMATE	ML	MEASURING LINE
ASSOC	ASSOCIATED	MO	MASONRY OPENING
AWP	ACOUSTICAL WALL PANEL	MTD	MOUNTED
AWV	ACOUSTICAL WALL SYSTEM	MTG	MOUNTING
BD	BOARD	NA	NOT APPLICABLE
BFC	BROOM FINISH CONCRETE	NB	NO BASE (EXPOSED WALL OR FOUNDATION)
BLDG	BUILDING	NC	NEW CONCRETE
BLKG	BLOCKING	NIC	NOT IN CONTRACT
BM	BEAM	NM	NEW MASONRY
BO	BOTTOM OF	NO	NUMBER
BOT	BOTTOM	NOM	NOMINAL
BRC	BEARING	NTS	NOT TO SCALE
BSMT	BASEMENT	OC	ON CENTER
BTWN	BETWEEN	OD	OUTSIDE DIAMETER
CAB	CABINET	OFF	OFFICE
OPT	CARPET	OFCI	OWNER FURNISHED/ CONTRACTOR INSTALLED
CIP	CAST-IN-PLACE	OFOI	OWNER FURNISHED/ OWNER INSTALLED
CJ	CONTROL JOINT	OPNG	OPENING
CL	CENTERLINE	OTA	OPEN TO ABOVE
CLG	CEILING	OTS	OPEN TO STRUCTURE
CMU	CONCRETE MASONRY UNITS	OVF	OVERFLOW
CO	CLEAN OUT	PC	PAINT COLOR
COL	COLUMN	P.I.V.	POST INDICATOR VALVE
CONC	CONCRETE	PLAST	PLASTIC
CONST	CONSTRUCT	PLYWD	PLYWOOD
CONT	CONTINUOUS	PR	PAIR
CSK	COUNTERSINK	R	THERMAL RESISTANCE
CMT	CERAMIC MOSAIC TILE	RCP	REFLECTED CEILING PLAN
CQT	CERAMIC QUARRY TILE	RD	ROOF DRAIN
CWB	CERAMIC WALL BASE	RDL	RAIN DRAIN LEADER
DBL	DOUBLE	RE	REFERENCE
DEPT	DEPARTMENT	REFRIG	REFRIGERATOR
DT	DETAIL	REINF	REINFORCING
DF	DRINKING FOUNTAIN	REQ	REQUIRED
DIA	DIAMETER	RF	EPOXY FLOOR SYSTEM
DIM	DIMENSION	RM	ROOM
DN	DOWN	RO	ROUGH OPENING
DS	DOWNSPOUT	RST	RUBBER STAR TREADS
EA	EACH	RW	REDWOOD
EBS	EXPANSION BASE TRIM	RWB	RUBBER WALL BASE
EJ	EXPANSION JOINT	RWC	RAIN WATER CONDUCTOR
ELEC	ELECTRICAL	SC	SEALED CONCRETE
ELEV	ELEVATION	SCHED	SCHEDULE
EP	EPOXY PAINT	SCW	SOLID CORE WOOD
EQ	EQUAL	SGWB	SUSPENDED GYPSUM
EQUIP	EQUIPMENT	SHT	SHEET
ESTR	EXPOSED STRUCTURE (NEW OR EXISTING)	SHTG	SHEATHING
EIFS	EXTERIOR INSULATION & FINISH SYSTEM	SH	SIMILAR
EXIST	EXISTING	SPECS	SPECIFICATIONS
EUP	EXPANSION	SQ	SQUARE
EXT	EXTERIOR	SS	STAINLESS STEEL
FD	FLOOR DRAIN	STD	STANDARD
F.D.C.	FIRE DEPARTMENT CONNECTION	STL	STEEL
FB	FIRE BLANKET	STR	STRUCTURAL
FE	FIRE EXTINGUISHER	SUSP	SUSPENDED
FF	FACTORY FINISH	SV	SHEET VINYL
F.H.	FIRE HYDRANT	T&G	TONGUE AND GROOVE
FIN	FINISH	TEMP	TEMPORARY
FL	FLOOR LINE	TO	TOP OF
FLR	FLOOR	TOM	TOP OF MASONRY
FND	FOUNDATION	TS	TUBE STEEL
FDC	FACE OF CHANNEL	TYP	TYPICAL
FOF	FACE OF FINISH	UCN	UNLESS OTHERWISE NOTED
FOS	FACE OF STUDS	VAR	VARIABLE
FT	FEET	VCT	VINYL COMPOSITION TILE
FTG	FOOTING	VERT	VERTICAL
FV	FIELD VERIFY	VEST	VESTIBULE
GA	GAUGE	W	WITH
GALV	GALVANIZED	WC	WATER CLOSET
GB	GYPSUM BOARD	WD	WOOD
GYP BD.	GYPSUM BOARD	WF	WALL FABRIC
HAS	HEAD ANCHOR STUD	WH	WATER HEATER
HCW	HOLLOW CORE WOOD	WM	WALK-OFF MAT
HM	HOLLOW METAL	WO	WITH OUT
HORIZ	HORIZONTAL	WP	WATERPROOF
HT	HEIGHT	WRGB	WATER RESISTANT GYPSUM BOARD
HW	HARDWOOD	WT	WEIGHT
ICMU	INTEGRAL COLORED CONCRETE MASONRY UNITS	WWF	WELED WIRE FABRIC
ID	INSIDE DIAMETER		
INSUL	INSULATION		
INT	INTERIOR		
INV	INVERT		

CODE INFORMATION: 3

APPLICABLE CODES

2017 NATIONAL ELECTRICAL CODE
 2017 IAHQ STATE PLUMBING CODE
 2015 INTERNATIONAL BUILDING CODE
 2015 INTERNATIONAL FIRE CODE
 2015 INTERNATIONAL EXISTING BUILDING CODE
 2015 INTERNATIONAL ENERGY CONSERVATION CODE
 2012 INTERNATIONAL MECHANICAL CODE
 2012 INTERNATIONAL FUEL GAS CODE
 2009 ICC A117.1-2009 ACCESSIBLE AND USABLE BUILDINGS AND FACILITIES
 1997 UNIFORM CODE FOR THE ABATEMENT OF DANGEROUS BUILDINGS

HARRISON ELEMENTARY SCHOOL

EXISTING SCHOOL

OCCUPANY TYPE: E FULLY SPRINKLERED

PROJECT DESCRIPTION: A TENANT IMPROVEMENT TO THE EXISTING HALLWAY CEILING

OCCUPANT LOAD: UNCHANGED

4 5 6

A

B

C

D

E

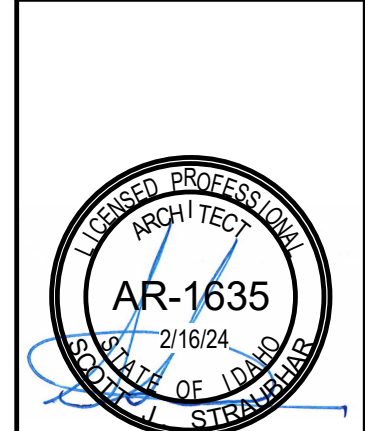
HUMMEL
ARCHITECTS

205 N. 10th Street, Suite 300, Boise, Idaho 83702, 208.343.7923
 482 Constitution Way, Suite 111, Idaho Falls, ID 83402, 208.343.7923
 hummelarch.com

Project:
TFSD 2023 CAPITAL IMPROVEMENTS -
PACKAGE 2, HALLWAY CEILING
IMPROVEMENTS AT HARRISON
ELEMENTARY SCHOOL
600 Harrison St
Twin Falls, ID 83301

Sheet:
DRAWING INFORMATION

PERMIT SET



Project No: 23010
 Drawn By: KT
 Checked By: PRUC
 Date: 2/23/2024

Sheet No:
G0.02

1

2

3

4

5

6

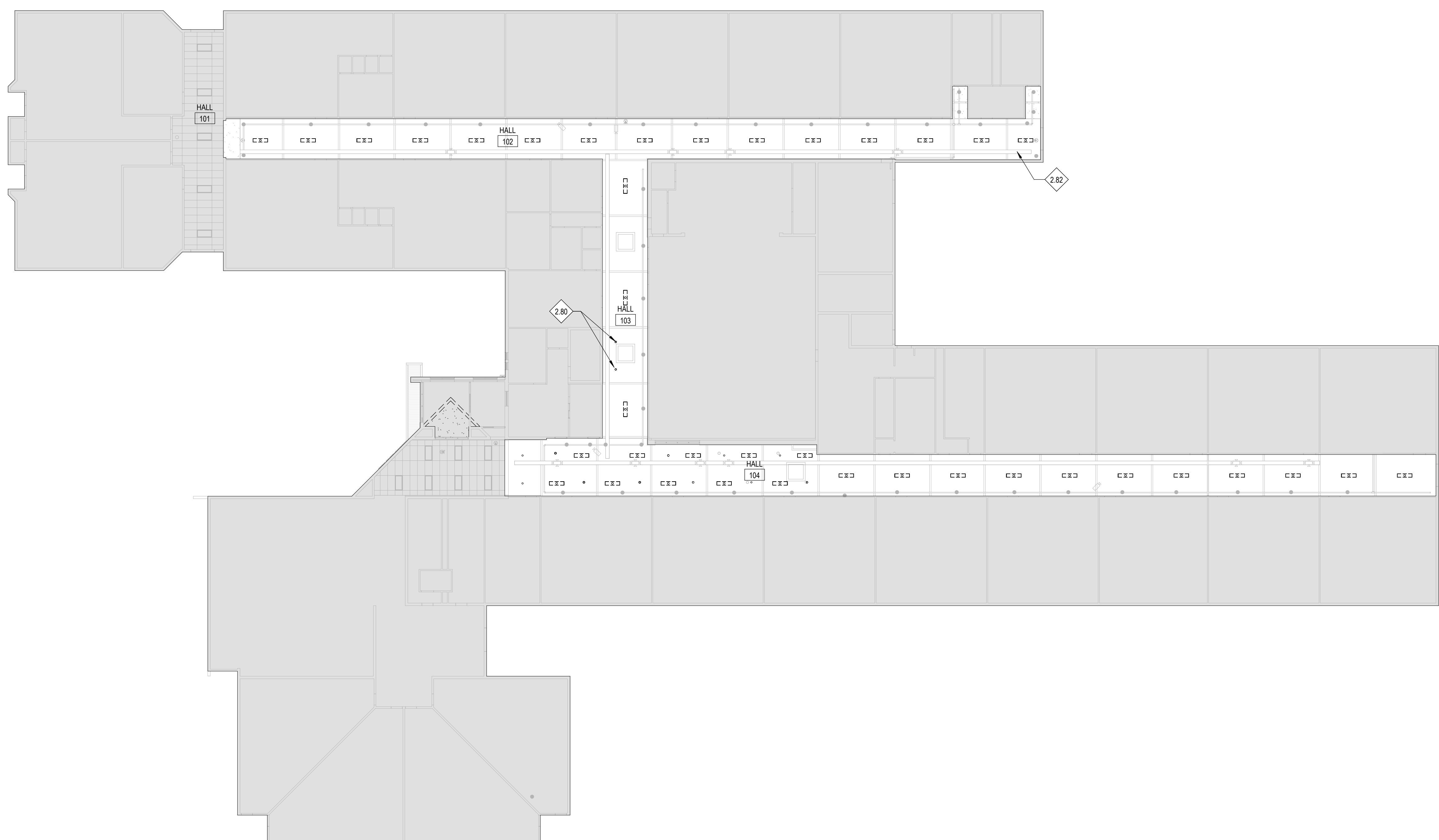
A

B

C

D

E



E1 LEVEL 01 - DEMO CEILING PLAN
 D9.01 1/16" = 1'-0"

REFERENCE NOTES

- 2.80 REMOVE EXISTING DIRECTIONAL LIGHT. SEE ELECTRICAL FOR NEW WORK.
- 2.82 EXISTING DATA TRAY TO REMAIN. PROTECT IN PLACE. SEE FINISH SCHEDULE FOR NEW WORK.

GENERAL NOTES

1. UNLESS NOTED OTHERWISE, ALL DIMENSIONS ARE TO THE FACE OF STUDS FOR GWB WALLS/PARTITIONS.
2. SCREENED LINES REPRESENT EXISTING WALLS, DOORS, WINDOWS, ETC TO REMAIN. PROTECT FROM DAMAGE DURING CONSTRUCTION ACTIVITIES.
3. PROTECT FROM DAMAGE ALL EXISTING TO REMAIN CASEWORK, EQUIPMENT, FLOOR FINISHES AND WALL FINISHES DURING CONSTRUCTION.
4. SEE MECHANICAL AND ELECTRICAL DRAWINGS FOR ADDITIONAL DEMOLITION WORK.
5. COORDINATE THE DEMOLITION OF EXISTING CEILING WITH NEW PLANS. REFLECTED CEILING PLANS.
6. SCREENED LINES REPRESENT EXISTING WALLS, DOORS, WINDOWS, ETC TO REMAIN. PROTECT FROM DAMAGE DURING CONSTRUCTION ACTIVITIES.
7. CONTRACTOR TO PATCH TO ADJACENT FINISHES AT TRANSITIONS BETWEEN EXISTING AND NEW WORK.
8. PROTECT FROM DAMAGE DURING DEMOLITION, MOVING AND CONSTRUCTION ALL EXISTING CASEWORK, EQUIPMENT, FURNITURE AND ARTWORK.
9. DRAWINGS INCORPORATE KNOWN CONDITIONS. NOTIFY ARCHITECT OF DISCREPANCIES BETWEEN EXISTING CONDITIONS AND DRAWINGS BEFORE PROCEEDING WITH SELECTIVE DEMOLITION.
10. CONTRACTOR IS REQUIRED TO VERIFY THE EXISTING CONDITIONS PRIOR TO BID. NOTIFY ARCHITECT IMMEDIATELY OF ANY DISCREPANCIES BETWEEN DRAWINGS AND EXISTING CONDITIONS.
11. CAREFULLY REMOVE AND SALVAGE ALL SPEAKERS AND SECURITY CAMERAS. SEE ELECTRICAL FOR NEW SCOPE OF WORK.

LEGEND

- EXISTING WALL SYSTEM TO REMAIN. PROTECT FROM DAMAGE DURING CONSTRUCTION.
- EXISTING CAPPED SKYLIGHT
- EXISTING LIGHT TO BE REMOVED
- NOT PART OF WORK

HUMMEL ARCHITECTS

205 N. 10th Street, Suite 300, Boise, Idaho 83702, 208.345.7923 | 482 Constitution Way, Suite 11, Idaho Falls, ID 83402, 208.345.7923 | hummelarch.com

Project:
 TFSD 2023 CAPITAL IMPROVEMENTS - PACKAGE 2, HALLWAY CEILING IMPROVEMENTS AT HARRISON ELEMENTARY SCHOOL
 600 Harrison St
 Twin Falls, ID 83301

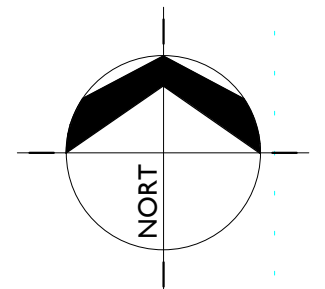
Sheet:
 LEVEL 01 - DEMO RCP

PERMIT SET

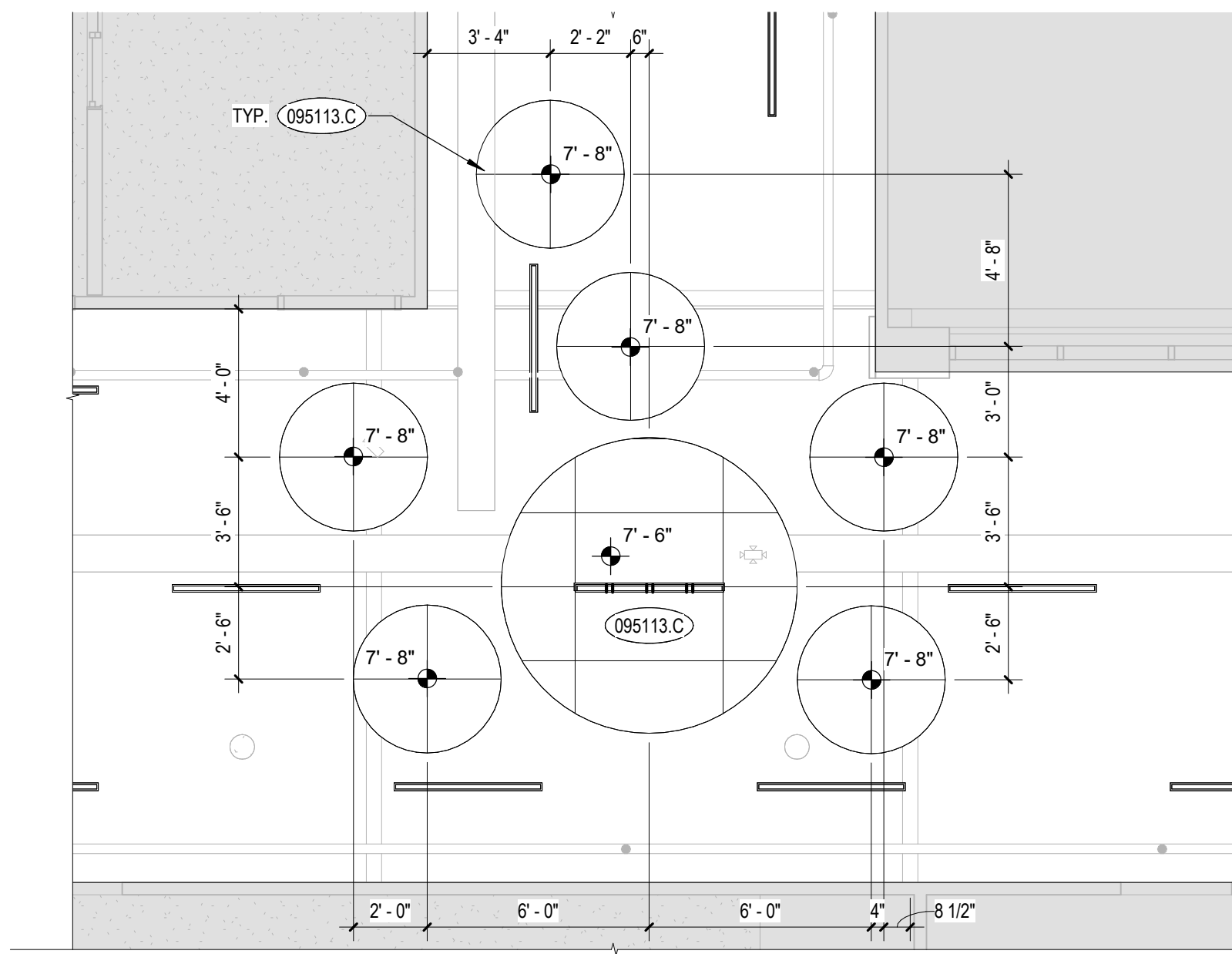


Project No: 23010
 Drawn By: KT
 Checked By: PRUC
 Date: 2/23/2024

Sheet No:
D9.01

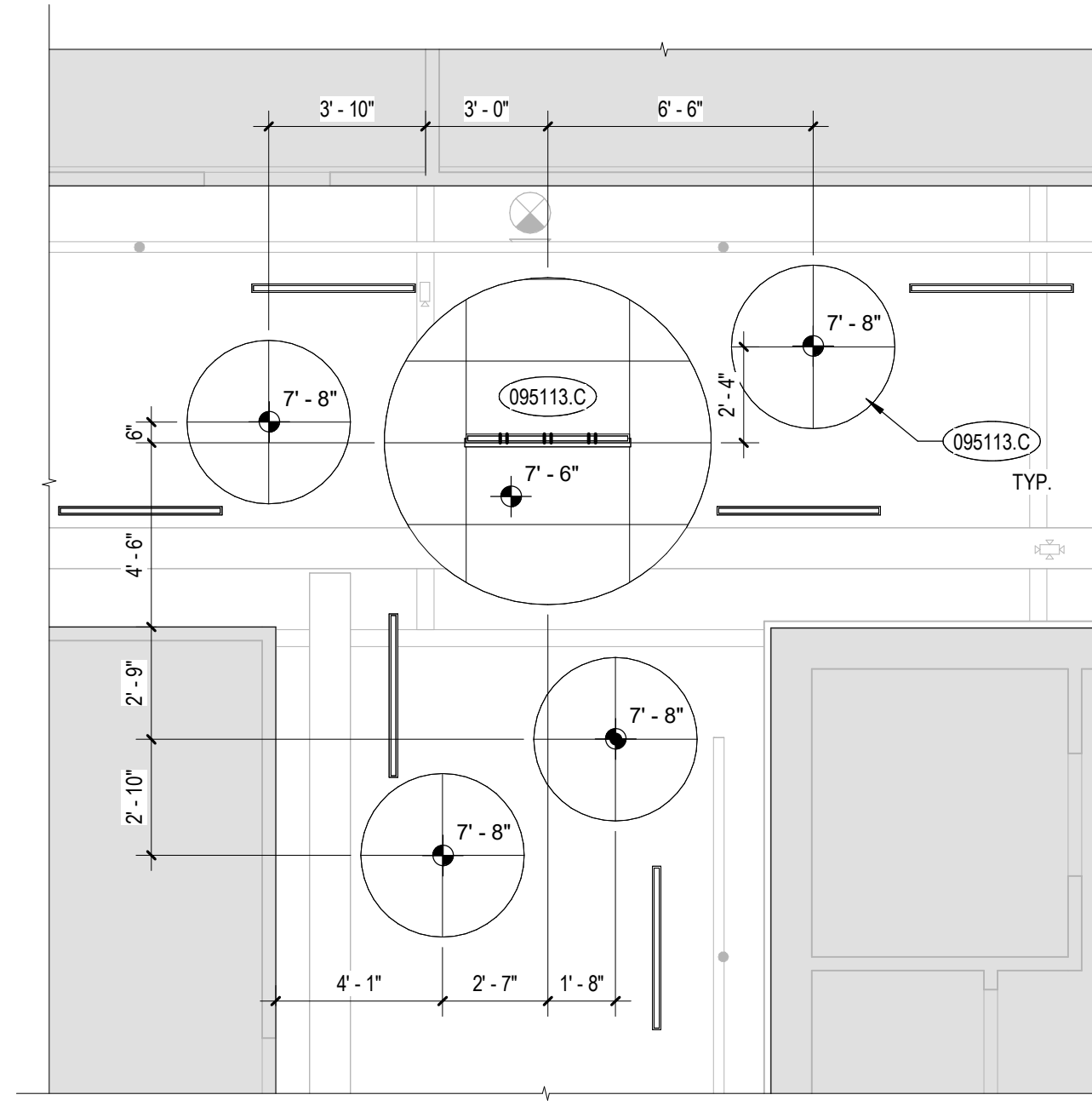


A



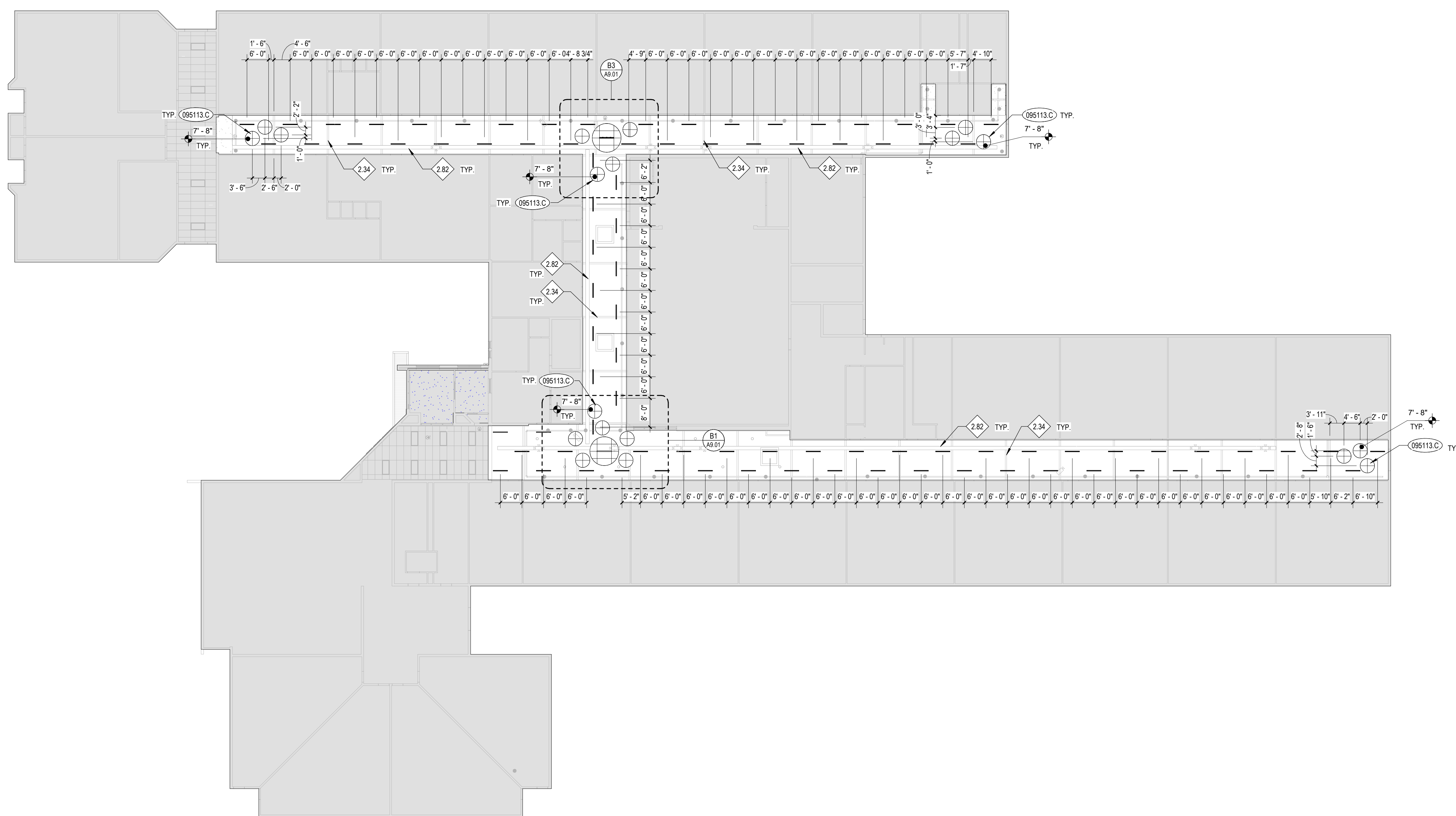
B1 CEILING CLOUD ENLARGED PLAN 1
 1/4" = 1'-0"

B



B3 CEILING CLOUD ENLARGED PLAN 2
 1/4" = 1'-0"

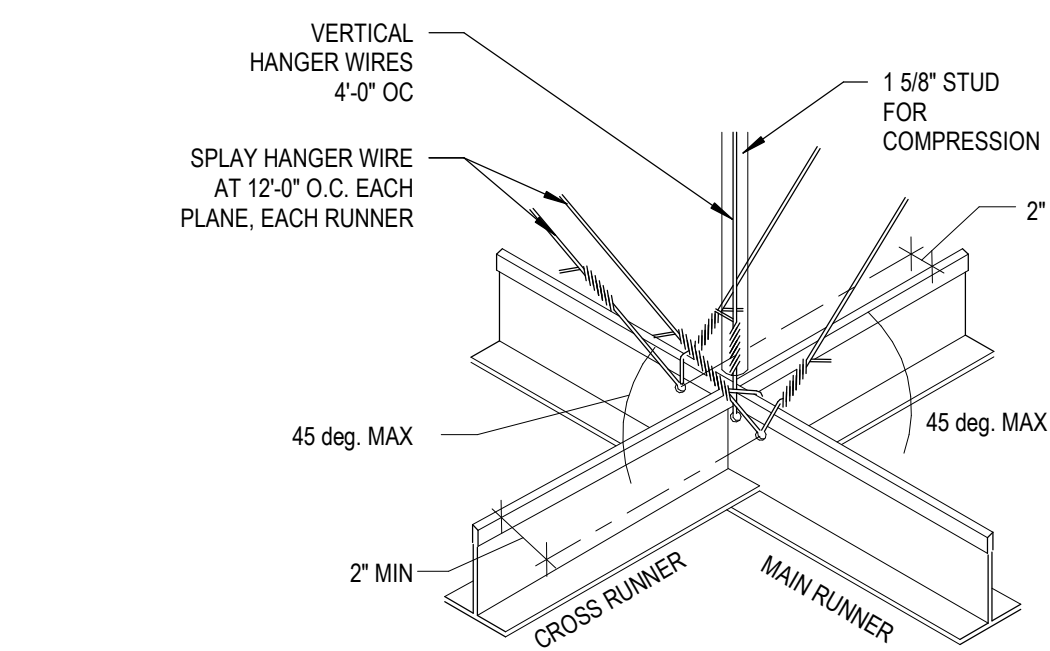
C



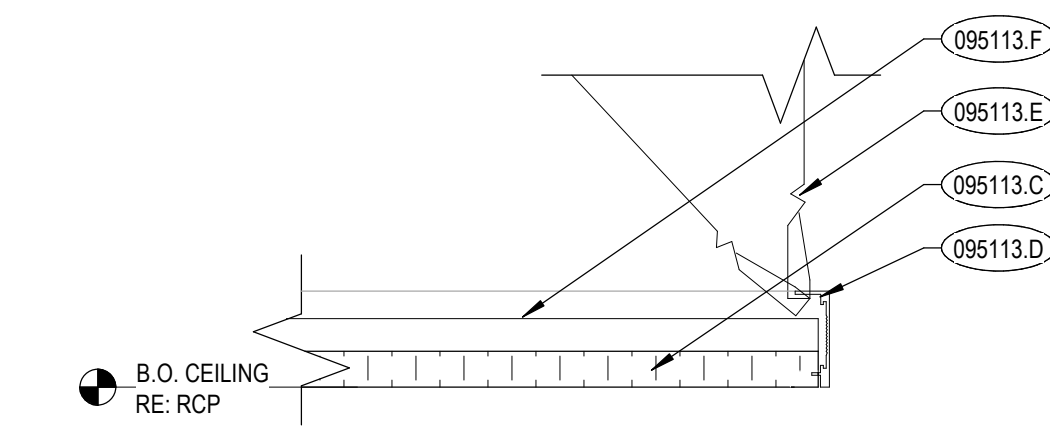
E1 LEVEL 01 - CEILING PLAN
 1/16" = 1'-0"

D

E



A6 TYPICAL SEISMIC BRACING DETAIL-01
 1/2" = 1'-0"



B6 CEILING CLOUD DETAIL
 3" = 1'-0"

KEYNOTES

- 095113.C APC-3
- 095113.D 2" CURBED TRIM, BASIS OF DESIGN: AXIOM VECTOR CURVED PERIMETER TRIM BY ARMSTRONG
- 095113.E HANGER WIRE
- 095113.F T-BAR GRID SYSTEM

REFERENCE NOTES

- 2.34 EXISTING BEAM TO REMAIN
- 2.82 EXISTING DATA TRAY TO REMAIN. PROTECT IN PLACE. SEE FINISH SCHEDULE FOR NEW WORK.
- 9.31 CROSS BRACING PER MANUFACTURERS INSTRUCTIONS

GENERAL NOTES

1. COORDINATE WITH MECHANICAL AND ELECTRICAL DRAWINGS AND SPECIFICATIONS FOR ADDITIONAL ITEMS TO BE PROVIDED AT THE CEILING PLANE AND IN THE WORK.
2. INSTALL ALL SUSPENSION SYSTEMS FOR ACOUSTICAL PANEL CEILING PER PROVISIONS OF ASTM C 635 AND ASTM C 636.
3. COORDINATE WITH MECHANICAL & ELECTRICAL DRAWINGS AND SPECIFICATIONS FOR PHYSICAL SIZES OF ALL CEILING GRILLES, DIFFUSERS, FIXTURES, CANS, AND ALL RELATED ITEMS.
4. PAINT ALL EXPOSED-TO-VIEW STRUCTURAL DECK, BEAMS AND ASSOCIATED STRUCTURAL ITEMS PAINT COLOR P-9, UNLESS OTHERWISE NOTED. RE. DIVISION 9 SECTION "INTERIOR PAINTING".
5. PAINT ALL EXPOSED-TO-VIEW MECHANICAL DUCTWORK AND ASSOCIATED ITEMS, ELECTRICAL CONDUIT, CABLE TRAYS AND ASSOCIATED ITEMS, PLUMBING AND FIRE PROTECTION LINES AND ALL ASSOCIATED ITEMS PAINT COLOR P-9, UNLESS OTHERWISE NOTED. RE. DIVISION 9 SECTION "INTERIOR PAINTING".
6. RE. DIVISION 9 SECTION "INTERIOR PAINTING" FOR ACOUSTIC CEILING TILE PAINT SYSTEM.
7. NEW WORK SHALL ALLOW FOR CONTINUED FUNCTIONALITY OF THE EXISTING EXIT SIGNS AND SECURITY CAMERAS. ADJUST EXISTING EXIT SIGNS AND SECURITY CAMERAS WHERE NECESSARY AND OTHER ASSOCIATED ITEMS. SEE MECHANICAL, PLUMBING, ELECTRICAL AND FIRE PROTECTION DRAWINGS FOR OTHER ITEMS REQUIRING ADJUSTMENTS.

LEGEND

- 8'-0" DIAMETER CIRCLE CLOUD
- 4'-0" DIAMETER CIRCLE CLOUD
- 4'-0" RECESSED LINEAR LIGHT
- 4'-0" PENDANT LINEAR LIGHT
- EXISTING FIRE SPRINKLER & PIPE
- NOT PART OF WORK

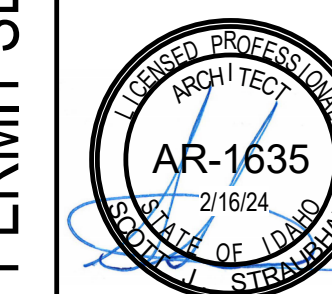
HUMMEL
 ARCHITECTS

205 N. 10th Street, Suite 300, Boise, Idaho 83702, 208.545.7023
 482 Constitution Way, Suite 101, Idaho Falls, ID 83402, 208.545.7023
 hummelarch.com

Project:
 TFSD 2023 CAPITAL IMPROVEMENTS - PACKAGE 2, HALLWAY CEILING IMPROVEMENTS AT HARRISON ELEMENTARY SCHOOL
 600 Harrison St, Twin Falls, ID 83301

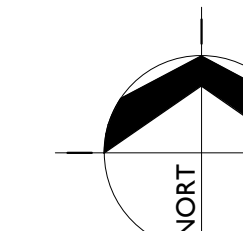
Sheet:
 LEVEL 01 - COMPOSITE CEILING PLAN

PERMIT SET



Project No: 23010
 Drawn By: KT
 Checked By: PRJC
 Date: 2/23/2024

Sheet No:
A9.01



1

2

3

4

5

6

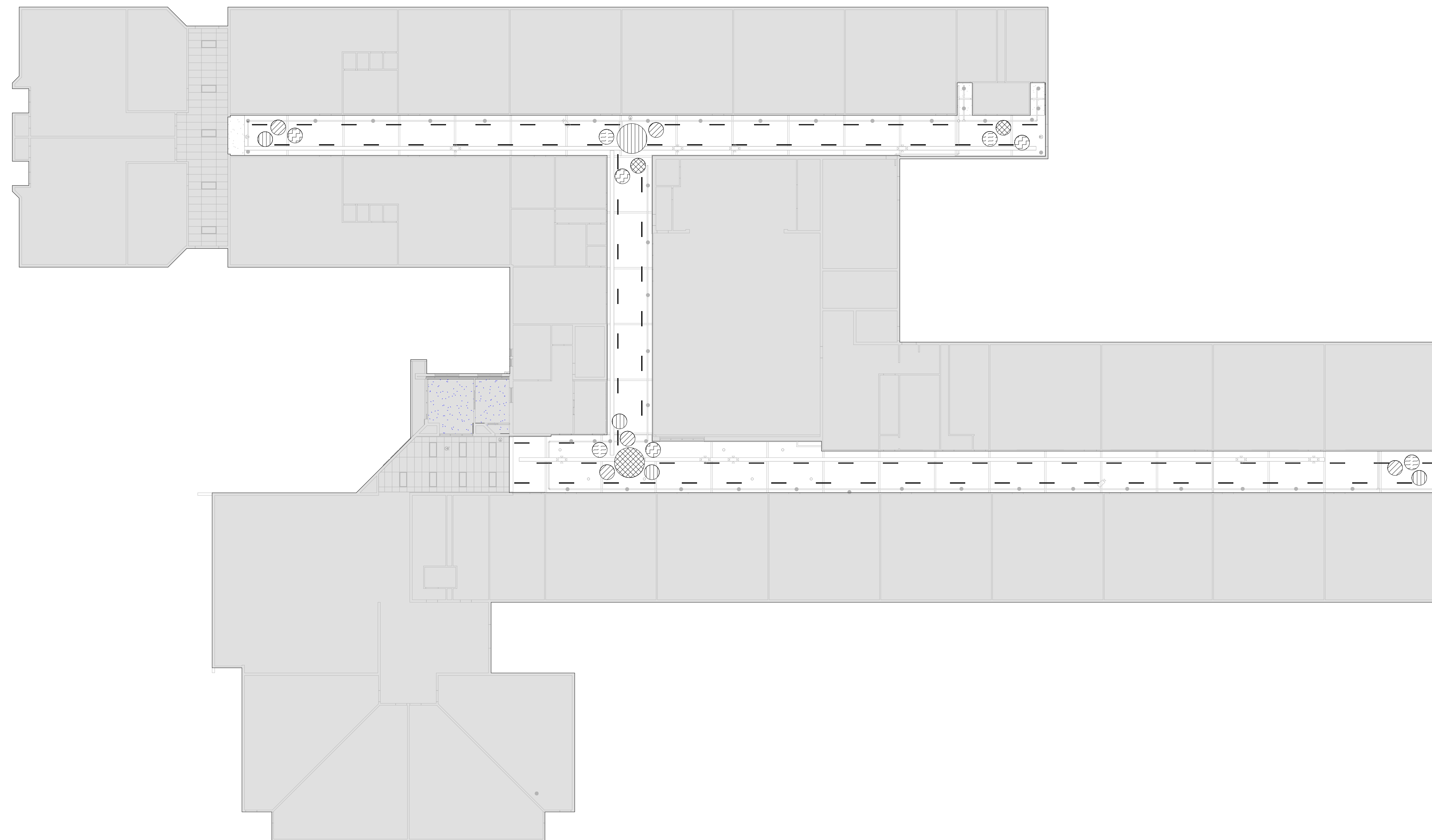
A

B

C

D

E



D2 LEVEL 01 - CEILING FINISH PLAN
 A9.02 1/16" = 1'-0"

GENERAL NOTES

1. PAINT ALL EXISTING AND NEW ITEMS INCLUDING BUT NOT LIMITED TO STRUCTURAL, MECHANICAL, PLUMBING, FIRE PROTECTION AND ELECTRICAL ITEMS ABOVE NEW CEILING CLOUDS. SEE SHEET A9.01

CEILING FINISH LEGEND

- NOT PART OF WORK
- C-2, PANEL CEILING COLOR - SEE SPEC SECTION 095113
- C-4, PANEL CEILING COLOR - SEE SPEC SECTION 095113
- C-5, PANEL CEILING COLOR - SEE SPEC SECTION 095113
- C-7, PANEL CEILING COLOR - SEE SPEC SECTION 095113
- C-8, PANEL CEILING COLOR - SEE SPEC SECTION 095113

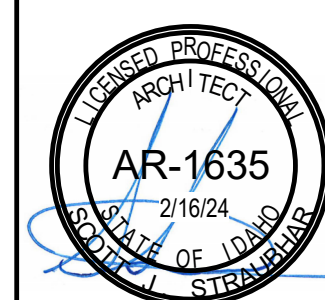
HUMMEL
 ARCHITECTS

205 N. 10th Street, Suite 300, Boise, Idaho 83702, 208.343.7923 | 482 Constitution Way, Suite 111, Idaho Falls, ID 83402, 208.343.7923 | hummelarch.com

Project:
 TFSD 2023 CAPITAL IMPROVEMENTS -
 PACKAGE 2, HALLWAY CEILING
 IMPROVEMENTS AT HARRISON
 ELEMENTARY SCHOOL
 600 Harrison St
 Twin Falls, ID 83301

Sheet:
 LEVEL 01 - CEILING FINISH
 PLAN

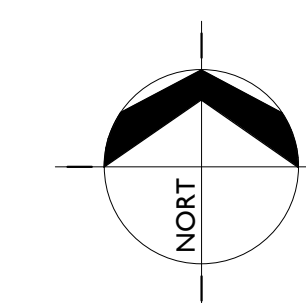
PERMIT SET



1 CONSOLIDATED SET 2/23/2024

Project No: 23010
 Drawn By: LH
 Checked By: KT
 Date: 2/23/2024

Sheet No: **A9.02**



A

B

C

D

E

GENERAL LEGEND (Not all symbols listed below are used on these drawings)					
ABBR.	SYMBOL	DESCRIPTION	ABBR.	SYMBOL	DESCRIPTION
		SECTION DESIGNATION			CAP END OF PIPE
		SECTION CUT ON THIS SHEET			PITCH DOWN IN DIRECTION OF ARROW
		VIEW REFERENCE DESIGNATION			PIPE ANCHOR
		VIEW REFERENCE ON THIS SHEET			PIPE ALIGNMENT GUIDE
		EQUIPMENT UNIT IDENTIFICATION			UNION OR FLANGE
		EQUIPMENT UNIT NUMBER (UNIT SERVED - FLOOR - SEQUENCE #)			CONCENTRIC PIPE REDUCER
		DIFFUSER IDENTIFICATION			ECCENTRIC PIPE REDUCER
		DIFFUSER NECK DIAMETER	PRV		PRESSURE REDUCING VALVE
		DIFFUSER CFM	PTRV		PRESSURE AND/OR TEMPERATURE RELIEF VALVE
		LINEAR DIFFUSER IDENTIFICATION			ISOLATION VALVE (RE: SPEC FOR TYPE)
		LINEAR DIFFUSER NECK DIAMETER			VERTICAL PIPE VALVE
		LINEAR DIFFUSER LENGTH	CV		CHECK VALVE
		LINEAR DIFFUSER CFM			SOLENOID / MOTORIZED VALVE
		FINNED TUBE RADIATOR ACTIVE ELEMENT LENGTH			SOLENOID VALVE
		EQUIPMENT UNIT IDENTIFICATION			HOSE END DRAIN VALVE
		EQUIPMENT UNIT NUMBER			PRESSURE / TEMPERATURE TAP
		RADIATOR ENCLOSURE LENGTH (OR W-W/WALL-TO-WALL)	PIT		STRAINER
		KEY NOTE REFERENCE			STRAINER W/ BLOWDOWN
		KITCHEN/OWNER/MEDICAL EQUIPMENT REFERENCE			BRAIDED FLEXIBLE PIPE CONNECTOR
		TYPICAL ROOM REFERENCE (TOP = RM #, BOTTOM = FLR)			DOUBLE-BOWL FLEXIBLE PIPE CONNECTOR
		POINT OF CONNECTION, NEW TO EXISTING			THERMOMETER
		POINT OF DISCONNECTION, DEMO			PRESSURE GAUGE
		DIRECTION OF FLOW IN PIPE			SIGHT GLASS
		DUCTWORK, PIPING AND EQUIPMENT TO BE REMOVED			CEILING ACCESS PANEL
(E)		EXISTING	C.A.P.		PUMP
(N)		NEW			THRUST BLOCK
(R)		RELOCATED			MANUAL AIR VENT
(F)		FUTURE	AAV		AUTOMATIC AIR VENT
DIA	Ø	DIAMETER			
WAD		WALL ACCESS DOOR			
NC		NOT IN CONTRACT			
AFF		ABOVE FINISHED FLOOR			
GC		GENERAL CONTRACTOR			
MC		MECHANICAL CONTRACTOR			
EC		ELECTRICAL CONTRACTOR			
UNO		UNLESS NOTED OTHERWISE			
C		COMMON			
NC		NORMALLY CLOSED			
NO		NORMALLY OPEN			

FIRE PROTECTION LEGEND (Not all symbols listed below are used on these drawings)					
ABBR.	SYMBOL	DESCRIPTION	ABBR.	SYMBOL	DESCRIPTION
F		FIRE SERVICE PIPING			NEW SPRINKLER HEAD
O.S.&Y		O.S.&Y GATE VALVE W/ TAMPER SWITCH			EXISTING SPRINKLER HEAD
FS		FLOW SWITCH			RELOCATED SPRINKLER HEAD
PIV		POST INDICATOR VALVE			SIDEWALL SPRINKLER HEAD
FDC		FIRE DEPARTMENT CONNECTION	D24		DRY SPRINKLER HEAD (SHAFT LENGTH)
			FHC		FIRE HOSE CABINET
			FVC		FIRE VALVE CABINET
			AIS		AUTOMATIC FIRE SPRINKLER

FIRE PROTECTION NOTES:

- FURNISH ALL LABOR, MATERIALS, EQUIPMENT AND SERVICES NECESSARY FOR THE INSTALLATION OF A COMPLETE AND PROPERLY FUNCTIONING FIRE PROTECTION SYSTEM.
- THE FIRE PROTECTION WORK INVOLVES ENGINEERING AND DESIGN BY THE CONTRACTOR TO DETERMINE THE EXTENT OF NEW WORK AND THE MODIFICATION AND EXTENSION OF EXISTING SYSTEMS TO PROVIDE FULL COVERAGE TO THE PROJECT AREA SHOWN ON THESE AND THE ARCHITECTURAL PLANS.
- THE INFORMATION PRESENTED ON THESE DRAWINGS IS DIAGRAMMATIC. IT DOES NOT NECESSARILY REPRESENT ALL ELBOWS, OFFSETS, HANGERS, ETC., REQUIRED FOR A COMPLETE WORKING SYSTEM.
- ALL FIRE PROTECTION SYSTEMS INSTALLED SHALL BE IN ACCORDANCE WITH NFPA-13, 14, 20, ETC. AND LOCAL BUILDING CODES AND ORDINANCES.
- FIRE PROTECTION CONTRACTOR SHALL COORDINATE THE LOCATION OF ALL NEW FIRE PROTECTION EQUIPMENT AND PIPING WITH ALL OTHER TRADES PRIOR TO SUBMITTAL OF SHOP DRAWINGS AND SYSTEM INSTALLATION, SO AS NOT TO INTERFERE WITH THE ROUTING OF NEW DUCTWORK, PLUMBING PIPING, ETC.
- PROVIDE ALL FITTINGS, RISER NIPPLES, ARM-OVERS, HANGERS, ETC. TO MAINTAIN CONFORMANCE WITH APPLICABLE STANDARDS AND TO POSITION THE SPRINKLERS IN THE PROPER LOCATIONS.
- SEAL ALL PIPE PENETRATIONS THROUGH FIRE RATED WALLS AND CEILINGS WITH FIRE STOPPING MATERIALS AS REQUIRED.
- FOR REMODEL AREAS NEW SPRINKLERS SHALL MATCH EXISTING SPRINKLERS.
- PROVIDE WORKING DRAWINGS AND HYDRAULICALLY CALCULATE THIS FIRE SPRINKLER SYSTEM PER NFPA-13 WHERE REQUIRED BY THE LOCAL AUTHORITY HAVING JURISDICTION.
- PROVIDE FIELD COORDINATION OF PIPING AND SPRINKLER INSTALLATIONS WITH DUCTWORK, LIGHTS, SMOKE DETECTORS, DIFFUSERS, ETC.



Project:
TFSD 2023 CAPITAL IMPROVEMENTS -
PACKAGE 2, HALLWAY (CEILING)
IMPROVEMENTS AT HARRISON
ELEMENTARY SCHOOL
600 Harrison St.
Twin Falls, ID 83301

Sheet:
FIRE PROTECTION LEGENDS
& NOTES

100% PERMIT SET



Project No: 23010
Drawn By: BS
Checked By: LJ
Date: 01/17/2024

Sheet No: F0.01

1

2

3

4

5

6

KEYNOTES

F1 MODIFY THE EXISTING FIRE SPRINKLER LAYOUT PER NFPA 13 TO ACCOMMODATE NEW CLOUD CEILINGS. REFER TO ARCHITECTURAL CEILING PLANS FOR MORE INFORMATION. REPLACE EXISTING SPRINKLER HEADS WITH QUICK RESPONSE HEADS AS NEEDED. COORDINATE WORK WITH OTHER TRADES.

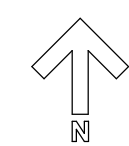
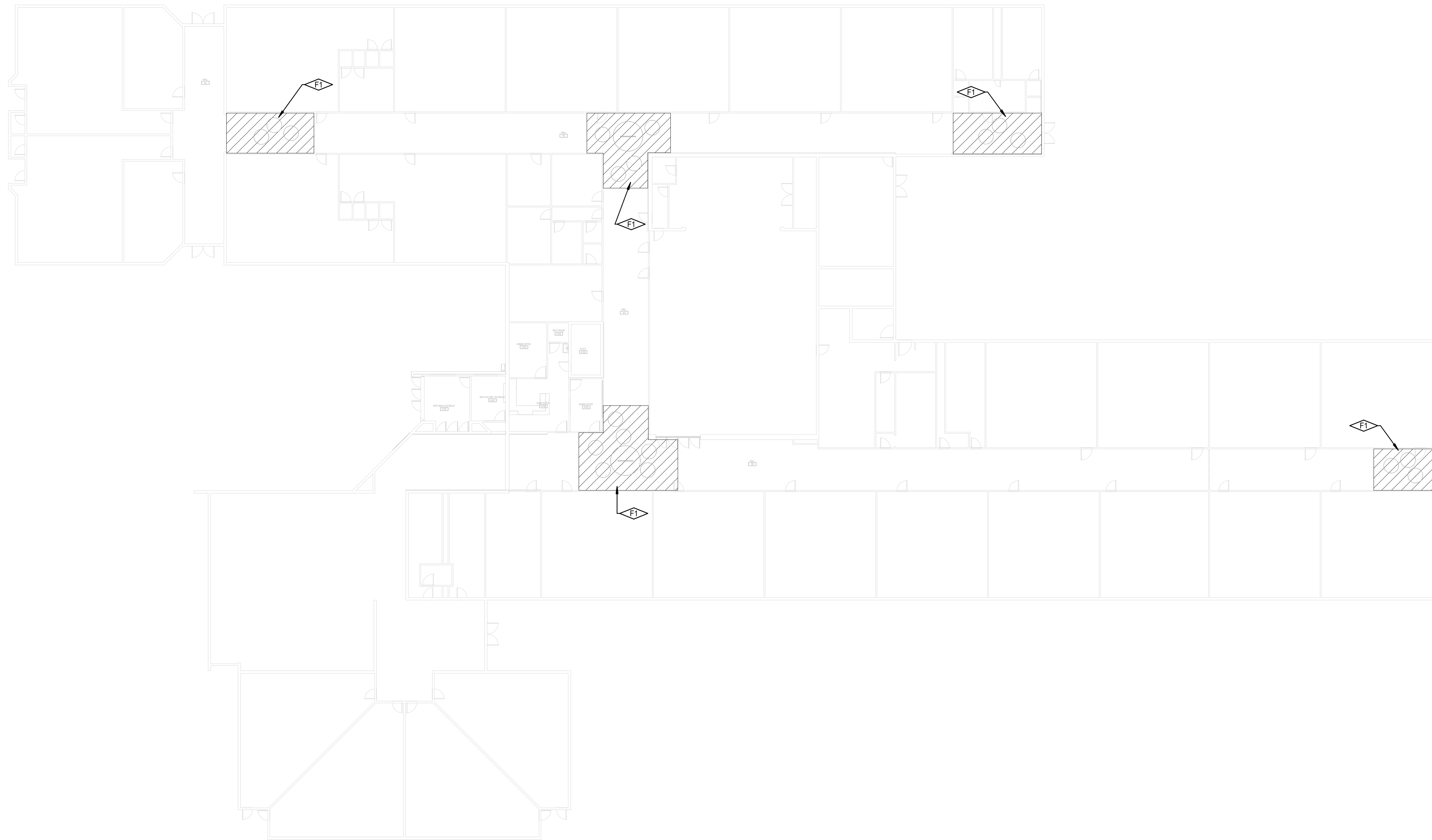
A

B

C

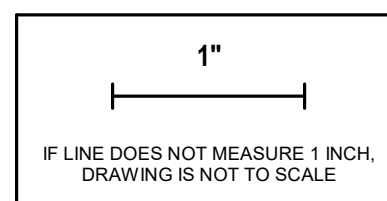
D

E



FIRE PROTECTION PLAN - HALLWAY IMPROVEMENTS

SCALE: 1/16" = 1'-0"



CATOR | RUMA
 & ASSOCIATES, CO.
 420 South Orchard Street, Boise, ID 83705
 (208) 343-3663 • www.catorruma.com

HUMMEL
 ARCHITECTS

205 N. 10th Street, Suite 300, Boise, Idaho 83702, 208.343.7923
 482 Constitution Way, Suite 111, Idaho Falls, ID 83402, 208.343.7923
 hummelarch.com

Project:
 TFSD 2023 CAPITAL IMPROVEMENTS -
 PACKAGE 2, HALLWAY (CEILING)
 IMPROVEMENTS AT HARRISON
 ELEMENTARY SCHOOL
 600 Harrison St.
 Twin Falls, ID 83301

Sheet:
 FIRE PROTECTION PLAN -
 HALLWAY IMPROVEMENTS

100% PERMIT SET



Project No: 23010
 Drawn By: BS
 Checked By: LJ
 Date: 01/17/2024

Sheet No: **F2.01**

LIGHTING LEGEND

(Not all symbols listed below are used on these drawings)

SYMBOL	DESCRIPTION	SYMBOL	DESCRIPTION
	SHADING INDICATES EM SYSTEM. LOWER CASE SUBSCRIPT INDICATES SWITCHING. UPPER CASE SUBSCRIPT INDICATES LUMINAIRE TYPE (TYP)		PENDANT LUMINAIRE - SINGLE SUSPENSION
	TROFFER - RECESSED		PENDANT LUMINAIRE - MULTIPLE SUSPENSION
	SURFACE LUMINAIRE		WALL MOUNTED LUMINAIRE
	LINEAR LUMINAIRE - RECESSED		IN-WALL LUMINAIRE
	FIELD MEASURED LUMINAIRE LENGTH AND SHAPE DENOTED BY LINEWORK. SUBSCRIPT IN RECTANGLE INDICATES LUMINAIRE TYPE		POLE LUMINAIRE - ARM MOUNTED
	DOWNLIGHT - RECESSED		POLE LUMINAIRE - POST TOP
	DOWNLIGHT - SURFACE		BOLLARD
	EXIT SIGN - CEILING MOUNTED		TRACK HEAD AND TRACK
	EXIT SIGN - WALL MOUNTED (FLUSH TO WALL)		EXTERIOR STAKE MOUNTED
	EXIT SIGN - WALL MOUNTED (PROJECTS FROM WALL)		EMERGENCY LIGHTING UNIT - WALL MOUNTED
	INDICATES EXIT SIGN FACES - SINGLE OR DOUBLE		EMERGENCY LIGHTING UNIT - CEILING MOUNTED
	INDICATES EXIT SIGN CHEVRONS - LEFT/RIGHT OR BOTH		INDICATES DIRECTIONAL AIMING

CONTROLS LEGEND

(Not all symbols listed below are used on these drawings)

SYMBOL	DESCRIPTION	SYMBOL	DESCRIPTION
	SINGLE POLE SWITCH (SUBSCRIPT DENOTES SWITCHING)		VARIABLE SPEEDSPEED CONTROLLER SWITCH
	TWO POLE SWITCH		EXPLOSION PROOF SWITCH
	THREE-WAY SWITCH		THERMAL OVERLOAD SWITCH
	FOUR-WAY SWITCH		MOMENTARY CONTACT SWITCH
	KEY OPERATED SWITCH		COMBINATION SWITCH AND DUPLEX RECEPTACLE
	MANUAL SWITCH, HORSEPOWER RATE		PHOTOCELL
	DIMMER SWITCH		PUSH BUTTON
	SWITCH WITH PILOT LIGHT (PILOT LIGHT IS ON WHEN SWITCH IS ON)		TIME CLOCK
	SWITCH WITH PILOT LIGHT LOCATOR (CONTINUOUSLY LIGHTED HANDLE)		OCCUPANCY SENSOR - WALL MOUNTED IR-INFRARED, US-Ultrasonic, DT-DUAL TECHNOLOGY
	LOW VOLTAGE SWITCH		SECURITY CAMERA CLD MOUNTED

REFERENCE SYMBOLS LEGEND

(Not all symbols listed below are used on these drawings)

SYMBOL	DESCRIPTION	SYMBOL	DESCRIPTION
	KEY NOTE REFERENCE		KITCHEN/OWNER/MEDICAL EQUIPMENT REFERENCE
	TYPICAL CIRCUIT NUMBER		EXISTING TO REMAIN
	TYPICAL LUMINAIRE TYPE		EXISTING TO BE REMOVED
	TYPICAL ROOM REFERENCE (TOP = RM #, BOTTOM = FLR)		EXISTING TO BE RELOCATED
	MECHANICAL EQUIPMENT REFERENCE		EXISTING TO REMAIN - REPLACE DEVICE
	LIGHTING CONTROL / EQUIPMENT REFERENCE		EXISTING TO BE REMOVED AND REPLACED
	ELECTRICAL ACCESSORIES REFERENCE		

ABBREVIATIONS LEGEND

(Not all symbols listed below are used on these drawings)

SYMBOL	DESCRIPTION	SYMBOL	DESCRIPTION
A	AMPERES	MCP	MOTOR CIRCUIT PROTECTOR
AC	ABOVE COUNTER MOUNT HORIZONTALLY TO CENTERLINE OF DEVICE, 1/4" ABOVE COUNTER OR BACK SPLASH	MEC	SEE MECHANICAL EQUIPMENT SCHEDULE
AF	ABOVE FINISHED FLOOR	MIN	MINIMUM
AFG	ABOVE FINISHED GRADE	MLO	MAIN LUGS ONLY
ANN	ANNUNCIATOR	MTS	MANUAL TRANSFER SWITCH
ARF	ABOVE RAISED FLOOR	NC	NORMALLY CLOSED
ASSD	AIR SAMPLING SMOKE DETECTION	NIC	NOT IN CONTRACT
ATS	AUTOMATIC TRANSFER SWITCH	NL	NIGHT LIGHT
BFG	BELOW FINISHED GRADE	NO	NORMALLY OPEN
C	CONDUIT	NTS	NOT TO SCALE
CATV	CABLE TELEVISION	OC	ON CENTER
CB	CIRCUIT BREAKER	OFI	OWNER FURNISHED, CONTRACTOR INSTALLED
CCTV	CLOSED CIRCUIT TELEVISION	OFOI	OWNER FURNISHED, OWNER INSTALLED
(E)	EXISTING	OSWF	ON SITE WORK FORCE
EM	EMERGENCY	PB	PULL BOX
EMDC	EMERGENCY MAIN DISTRIBUTION CENTER	SB	STAND-BY
EP	EXPLOSION PROOF	SDC	SUB-DISTRIBUTION CENTER
EPO	EMERGENCY POWER OFF	TP	TAMPER PROOF
EVO	EMERGENCY VENTILATION ON/OFF	TVSS	TRANSIENT VOLTAGE SURGE SUPPRESSOR
ENC	ELECTRIC WATER COOLER	TYP	TYPICAL
FA	FIRE ALARM	UF	UNDER FLOOR
G	GROUND	UG	UNDER GROUND
GP	GENERATOR CONTROL PANEL	UN	UNLESS OTHERWISE NOTED
GFCI	GROUND FAULT CIRCUIT INTERRUPTER	UPS	UNINTERRUPTIBLE POWER SUPPLY
HOA	HAND OFF AUTOMATIC	V	VOLTS
IG	ISOLATED GROUND	VFD	VARIABLE FREQUENCY DRIVE
MAX	MAXIMUM	W	WITH
MCB	MAIN CIRCUIT BREAKER	W/O	WITHOUT
MCC	MOTOR CONTROL CENTER	WP	WEATHER PROOF
MDC	MAIN DISTRIBUTION CENTER	XFM	TRANSFORMER

LIGHTING PLAN NOTES:

- REFER TO ARCHITECTURAL ELEVATIONS AND REFLECTED CEILING PLANS FOR EXACT MOUNTING LOCATIONS OF DEVICES AND LUMINAIRES.
- COORDINATE LUMINAIRE LOCATIONS WITH MECHANICAL PIPING, DUCTWORK, ETC., TO AVOID CONFLICTS. SEE SPECIFICATIONS FOR COORDINATION REQUIREMENTS.

GENERAL NOTES:

- FOR REMODELING WORK INCLUDED IS DENOTED IN BOLD. EXISTING CONDITIONS TO REMAIN ARE DENOTED LIGHTLY.
- PROTECT STRUCTURE AND OWNER EQUIPMENT FROM DAMAGE. IMMEDIATELY REPLACE OR REPAIR TO ORIGINAL CONDITION DAMAGE CAUSED BY THE CONTRACTOR WHETHER EQUIPMENT APPEARS TO BE CURRENTLY IN USE OR NOT. UNLESS WRITTEN AUTHORIZATION FROM THE OWNER INDICATED OTHERWISE, PREPARE LISTING OF ALL EXISTING DAMAGED ITEMS AND SUBMIT TO OWNER PRIOR TO BEGINNING WORK.
- COORDINATE EXACT REQUIREMENTS AND LOCATIONS OF MECHANICAL EQUIPMENT WITH MECHANICAL DRAWINGS AND MECHANICAL CONTRACTOR PRIOR TO ROUGH-IN AND ORDERING MATERIALS OR EQUIPMENT.
- EXISTING INFORMATION SHOWN ON THE DRAWINGS HAS BEEN TAKEN FROM OWNER FURNISHED DRAWINGS AND/OR LIMITED FIELD OBSERVATIONS. CATOR, RUMA & ASSOCIATES IS NOT RESPONSIBLE FOR THE ACCURACY OF ANY INFORMATION OR THE ADEQUACY, SAFETY AND CONFORMANCE TO CURRENT PREVAILING CODES OF ANY WORK SHOWN AS EXISTING ON THESE DRAWINGS.

DEMOLITION NOTES:

- UNLESS NOTED OTHERWISE, BOLD ITEMS INDICATE EQUIPMENT, DEVICES, ETC., TO BE REMOVED. SEE SPECIFICATION SECTION 260500 FOR REMODEL/DEMOLITION DETAILED REQUIREMENTS.
- DEMOLITION DRAWINGS MAY NOT SHOW EVERY ITEM TO BE DEMOLISHED. CONTRACTOR SHALL VISIT SITE TO DETERMINE AND COORDINATE THE EXACT EXTENT OF DEMOLITION TO FACILITATE ALL WORK INDICATED BY THE CONTRACT DOCUMENTS PRIOR TO QUOTATION. NO EXTRAS WILL BE ALLOWED FOR WORK REQUIRED TO ACHIEVE THE END RESULT AS INDICATED BY THE CONTRACT DOCUMENTS. REWORK EXISTING TERMINATIONS, CONNECTIONS, CONDUIT, WIRING, ETC. TO ACCEPT NEW WORK. MAINTAIN CIRCUIT CONTINUITY TO EXISTING CIRCUITS AND DEVICES TO REMAIN OR REMODEL/DEMOLITION DETAILED REQUIREMENTS TO BE RELOCATED PRIOR TO COMMENCEMENT OF ANY DEMO WORK. CONFIRM EXISTING CONDITIONS AND NOTIFY ENGINEER OF ANY DISCREPANCIES FOR RESOLUTION.
- ALL ITEMS IDENTIFIED TO BE REMOVED SHALL BE REMOVED IN THEIR ENTIRETY INCLUDING ALL WIRING AND EXPOSED CONDUIT AND CONDUIT SUPPORTS BACK TO POINT OF ORIGIN OR NEXT DEVICE TO REMAIN. REMOVED ITEMS SHALL BE TURNED OVER TO THE OWNER, UNLESS NOTED OTHERWISE, AND STORED IN THE AREA DESIGNATED BY THE OWNER. REMOVE FROM SITE AND LEGALLY DISPOSE OF ALL ITEMS THE OWNER CHOOSES NOT TO ACCEPT.
- REUSE EXISTING CONDUIT WHERE CURRENT NEC AND LOCAL CODE REQUIREMENTS ARE MAINTAINED. PROVIDE NEW CONDUIT AND WIRE FOR NEW INSTALLATIONS AND EXTENSION OF EXISTING INSTALLATIONS. REUSE EXISTING CONDUIT IN PLACE, DO NOT REINSTALL EXISTING CONDUIT. PROVIDE LABELING PER SPECIFICATIONS FOR REUSED CONDUIT.
- RELOCATED EQUIPMENT AND DEVICES ARE TO BE CLEANED OF ALL FOREIGN MATERIAL. REPLACE EQUIPMENT OR DEVICES WHICH ARE DEFECTIVE OR DAMAGED DURING RELOCATION.

LUMINAIRE SCHEDULE

COMMON NOTES:

- CATALOG NUMBER REFERS TO FIRST NAME LISTED UNDER MANUFACTURER PER LUMINAIRE TYPE. REMAINING MANUFACTURERS LISTED ARE CONSIDERED TO BE EQUIVALENT PRODUCTS FOR THIS PROJECT AND SHALL MEET ALL CRITERIA LISTED INCLUDING THAT CALLED FOR BY THE SPECIFIC LUMINAIRE CATALOG NUMBER. CATALOG NUMBERS DO NOT NECESSARILY REPRESENT COMPLETE CATALOG NUMBERS. ALL ITEMS LISTED IN THE DESCRIPTION SHALL BE PROVIDED.
- REFER TO LIGHTING SPECIFICATIONS FOR ADDITIONAL REQUIREMENTS.
- PROVIDE UNIT PRICING FOR ALL LUMINAIRES BY TYPE AND SUBMIT WITH BID FORM.
- PROVIDE AN EMERGENCY BALLAST TEST SWITCH FOR RECESSED DOWNLIGHTS ON CEILING ADJACENT TO LUMINAIRE.
- PROVIDE FLICKER FREE LED DRIVERS MEETING IEEE 1789.

SPECIFIC REMARKS:

- SUSPEND FIXTURES SO THE BOTTOM OF FIXTURE ALIGNS WITH THE BOTTOM OF THE DATA TRAY.

TYPE	DESCRIPTION	LAMP		BALLAST/DRIVER			APPARENT LOAD	MANUFACTURER	CATALOG SERIES	FINISH	MOUNTING	REMARKS
		COLOR	LUMENS	TYPE	DIM LEVEL	VOLTAGE						
L1	4LX2W RECESSED MOUNTED LINEAR, DIRECT HIGH-EFFICIENCY LAMBERTIAN OPTIC, FLUSH LENS, STATIC WHITE, 80 CRI	3500K	200L/FT	0-10V	1%	120 V	6 VA	LUMENWERX FINELITE	VIA2R HP-2R	WHITE	RECESSED	
L2	4LX2W SUSPENDED LINEAR, DIRECT HIGH-EFFICIENCY LAMBERTIAN OPTIC, INDIRECT WIDESPREAD OPTIC, FLUSH LENS, STATIC WHITE, 80 CRI	3500K	350L/FT D 200L/FT ID	0-10V	1%	120 V	17 VA	LUMENWERX FINELITE	VIA2P HP-2P	WHITE	SUSPENDED	1

COMcheck Software Version COMcheckWeb Interior Lighting Compliance Certificate

Project Information

Energy Code: 2018 IECC
 Project Title: TFSD Harrison Elementary School
 Project Type: Alteration

Construction Site: Twin Falls, Idaho
 Owner/Agent: Twin Falls School District
 Designer/Contractor: Kyle Olson, Cator Ruma & Associates
 420 S Orchard St #1238
 Boise, Idaho 83709
 (208) 343-3663
 kolsen@catorruma.com

Allowed Interior Lighting Power

A Area Category	B Floor Area (ft ²)	C Allowed Watts / ft ²	D Allowed Watts
1-Corridor (School/University)	6337	0.81	5133
Total Allowed Watts =			5133

Proposed Interior Lighting Power

A Fixture ID : Description / Lamp / Wattage Per Lamp / Ballast	B Lamps / Fixture	C # of Fixture	D Wattage	E Total (C X D)
Corridor (School/University, 6337 sq. ft.)	1	2	6	12
LED: L1: RE: LUMINAIRE SCHEDULE: Other:	1	90	17	1530
LED: L2: RE: LUMINAIRE SCHEDULE: Other:				
Total Proposed Watts =				1542

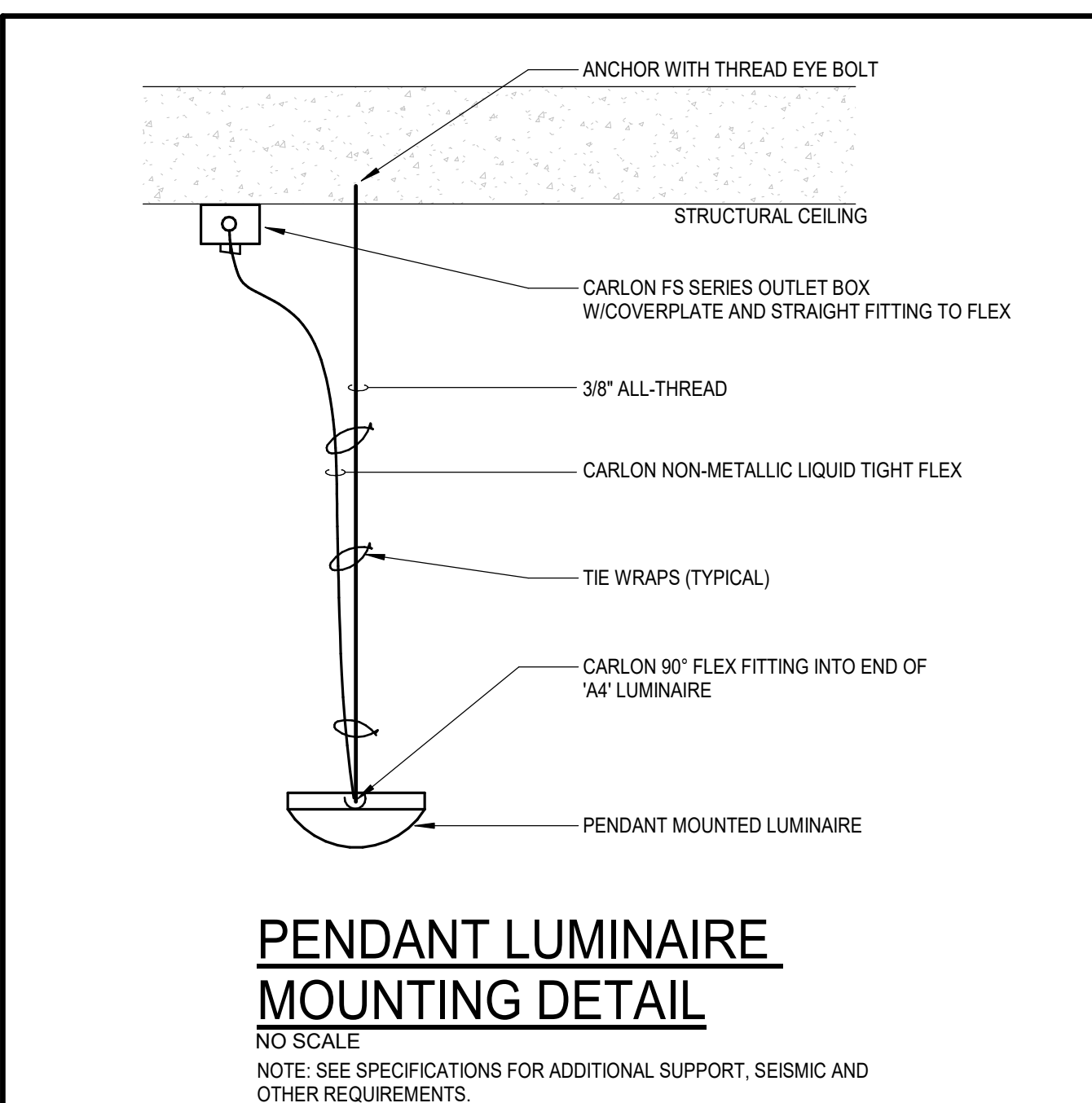
Interior Lighting PASSES

Interior Lighting Compliance Statement

Compliance Statement: The proposed interior lighting alteration project represented in this document is consistent with the building plans, specifications, and other calculations submitted with this permit application. The proposed interior lighting systems have been designed to meet the 2018 IECC requirements in COMcheck Version COMcheckWeb and to comply with any applicable mandatory requirements listed in the inspection Checklist.

Kyle Olson, PE - Electrical Engineer
 Name - Title: Kyle Olson, PE - Electrical Engineer
 Signature: [Signature]
 Date: 01/17/2024

Project Title: TFSD Harrison Elementary School
 Data filename: [Filename]
 Report date: 01/17/24
 Page: 1 of 5



CATOR RUMA & ASSOCIATES, CO.
 420 South Orchard Street, Boise, ID 83705
 (208) 343-3663 • www.catorruma.com

HUMMEL ARCHITECTS

205 N. 10th Street, Suite 200, Boise, Idaho 83702, 208.343.7923
 482 Constitution Way, Suite 111, Idaho Falls, ID 83402, 208.343.7923
 hummelarch.com

Project:
 TFSD 2023 CAPITAL IMPROVEMENTS - PACKAGE 2, HALLWAY (CEILING) IMPROVEMENTS AT HARRISON ELEMENTARY SCHOOL
 600 Harrison St.
 Twin Falls, ID 83301

Sheet:
 ELECTRICAL LEGENDS, SCHEDULES & NOTES

100% PERMIT SET

Project No: 23010
 Drawn By: BEL
 Checked By: KEO
 Date: 01/17/2024

Sheet No: **E0.01**

1

2

3

4

5

6

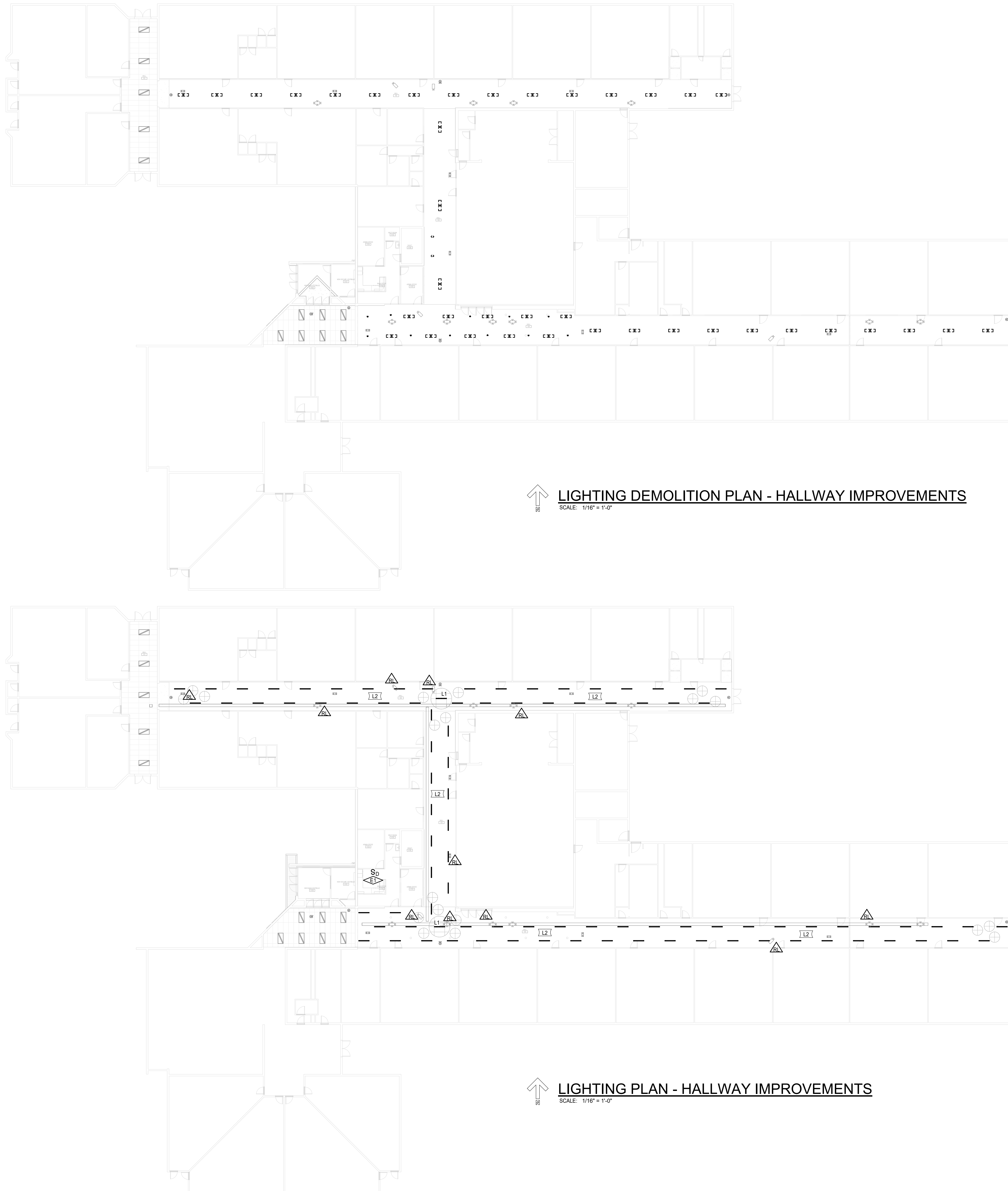
A

B

C

D

E



↑ LIGHTING DEMOLITION PLAN - HALLWAY IMPROVEMENTS
SCALE: 1/16" = 1'-0"

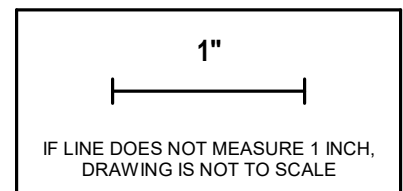
↑ LIGHTING PLAN - HALLWAY IMPROVEMENTS
SCALE: 1/16" = 1'-0"

KEYNOTES

E1 THE LIGHTING INTO EXISTING BUILDING LIGHTING CONTROLS. INCORPORATE WALL BOX DIMMER FOR FINAL OUTPUT.

GENERAL NOTES:

- EXISTING LIGHTING CIRCUITRY TO BE MAINTAINED AND EXTENDED TO NEW FIXTURES.
- RELOCATE EXISTING CAMERAS WHERE NEW ARCHITECTURAL CEILING CLOUDS AND LIGHTING OBSCURE CAMERA'S FIELD OF VIEW. RL TAGS PLACED ON THE REFLECTED CEILING PLAN INDICATE POSSIBLE CAMERA CONFLICTS. FIELD VERIFY ALL LOCATIONS WITH OWNER.
- RELOCATE EXISTING EMERGENCY LIGHTS AND EXIT LIGHTS WHERE NEW ARCHITECTURAL CEILING CLOUDS AND LIGHTING LAYOUT CONFLICT WITH EXISTING LOCATIONS. RL TAGS PLACED ON THE REFLECTED CEILING PLAN INDICATE POSSIBLE CONFLICTS. FIELD VERIFY ALL LOCATIONS WITH OWNER.
- RELOCATE EXISTING SPEAKERS WHERE NEW ARCHITECTURAL CEILING CLOUDS CONFLICT WITH EXISTING LOCATIONS.
- COORDINATE ALL RELOCATED DEVICES WITH ARCHITECT PRIOR TO PERFORMING WORK.



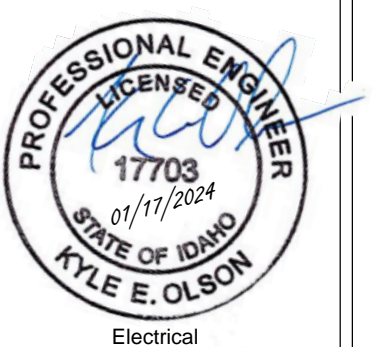
CATOR | RUMA
& ASSOCIATES, CO.
420 South Orchard Street, Boise, ID 83705
(208) 343-3663 • www.catorruma.com

HUMMEL
ARCHITECTS
205 N. 10th Street, Suite 300, Boise, Idaho 83702, 208.343.7923
482 Constitution Way, Suite 111, Idaho Falls, ID 83402, 208.343.7923
hummeearch.com

Project:
TFSD 2023 CAPITAL IMPROVEMENTS - PACKAGE 2, HALLWAY (CEILING) IMPROVEMENTS AT HARRISON ELEMENTARY SCHOOL
600 Harrison St.
Twin Falls, ID 83301

Sheet:
LIGHTING PLANS - HALLWAY IMPROVEMENTS

100% PERMIT SET



Project No: 23010
Drawn By: BEL
Checked By: KEO
Date: 01/17/2024

Sheet No: **E2.01**